

# Recombinant Full Length Human MEF2A Protein, C-Flag-tagged

Cat. No. MEF2A-1842HFL    Lot. No. (See product label)

## SPECIFICATION

<b>Product Overview</b>	Recombinant Full Length Human MEF2A Protein, fused to Flag-tag at C-terminus, was expressed in Mammalian cells.
<b>Species</b>	Human
<b>Source</b>	Mammalian Cells
<b>Description</b>	The protein encoded by this gene is a DNA-binding transcription factor that activates many muscle-specific, growth factor-induced, and stress-induced genes. The encoded protein can act as a homodimer or as a heterodimer and is involved in several cellular processes, including muscle development, neuronal differentiation, cell growth control, and apoptosis. Defects in this gene could be a cause of autosomal dominant coronary artery disease 1 with myocardial infarction (ADCAD1). Several transcript variants encoding different isoforms have been found for this gene.
<b>Form</b>	25 mM Tris HCl, pH 7.3, 100 mM glycine, 10% glycerol.
<b>Molecular Mass</b>	53.7 kDa
<b>AA Sequence</b>	MGRKKIQITRIMDERNRQVTFTRKRFGLMKKAYELSVLCDCEIALIIFNSSNKLFQYAS TDMDKVLLKYT EYNEPHESRTNSDIVEALNKKEHRGCDSPDPDTSYVLTTPHTEEKY KKINEEFDNMMRNHKKIAPGLPPQNF SMSVTVPVTSPNALSYTNPGSSSLVSPSLAAS STLTDSSMLSPQTTLHRNVSPGAPQRPPSTGNAGGMLS TTDLTVPNGAGSSSPVG NGFVNSRASP NLIGATGANS LGKVMPTKSPPPP GGGNLGMNSRKPDLRVVIPPS SK

 Tel: 1-631-559-9269    1-516-512-3133

 Email: [info@creative-biomart.com](mailto:info@creative-biomart.com)     Fax: 1-631-938-8127

 45-1 Ramsey Road, Shirley, NY 11967, USA

GMPPLNTQRISSSQATQPLATPVVSVTTPSLPPQGLVYSAMPTAYNTDYSLTSADL  
 SALQGFNSPGM LSLGQVSAWQQHHLGQAALSSLVAGGQLSQGSNLSINTNQNISIK  
 SEPISPPRDRMTPSGFQQQQQQQQQ QPPPPPPQPQPQPQPQPRQEMGRSPVD  
 SLSSSSSSYDGSREDPRGDFHSPIVLGRPPNTEDRESPSVK RMRMDAWVT SGP  
 TRTRRLEQKLISEEDLAANDILDYKDDDDKV

<b>Purity</b>	> 80% as determined by SDS-PAGE and Coomassie blue staining.
<b>Stability</b>	Stable for 12 months from the date of receipt of the product under proper storage and handling conditions. Avoid repeated freeze-thaw cycles.
<b>Storage</b>	Store at -80 centigrade.
<b>Concentration</b>	>50 ug/mL as determined by microplate BCA method.
<b>Preparation</b>	Recombinant protein was captured through anti-DDK affinity column followed by conventional chromatography steps.
<b>Protein Families</b>	Transcription Factors
<b>Full Length</b>	Full L.

## GENE INFORMATION

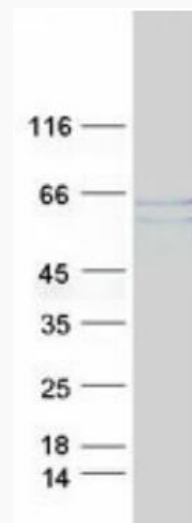
<b>Gene Name</b>	MEF2A myocyte enhancer factor 2A [ Homo sapiens (human) ]
<b>Official Symbol</b>	MEF2A
<b>Synonyms</b>	mef2; ADCAD1; RSRFC4; RSRFC9
<b>Gene ID</b>	4205

mRNA Refseq [NM\\_005587.6](#)

Protein Refseq [NP\\_005578.2](#)

MIM [600660](#)

UniProt ID [Q02078](#)



Coomassie blue staining of purified MEF2A protein.

 Tel: 1-631-559-9269 1-516-512-3133

 Email: [info@creative-biomart.com](mailto:info@creative-biomart.com)  Fax: 1-631-938-8127

 45-1 Ramsey Road, Shirley, NY 11967, USA