

# Recombinant Human MEF2A Protein, Myc/DDK-tagged, C13 and N15-labeled

Cat. No. MEF2A-2972H    Lot. No. (See product label)

## SPECIFICATION

<b>Product Overview</b>	MEF2A MS Standard C13 and N15-labeled recombinant protein (NP_005578) with a C-terminal MYC/DDK tag, was expressed in HEK293 cells.
<b>Species</b>	Human
<b>Source</b>	HEK293
<b>Description</b>	The protein encoded by this gene is a DNA-binding transcription factor that activates many muscle-specific, growth factor-induced, and stress-induced genes. The encoded protein can act as a homodimer or as a heterodimer and is involved in several cellular processes, including muscle development, neuronal differentiation, cell growth control, and apoptosis. Defects in this gene could be a cause of autosomal dominant coronary artery disease 1 with myocardial infarction (ADCAD1). Several transcript variants encoding different isoforms have been found for this gene.
<b>Molecular Mass</b>	53.7 kDa
<b>AA Sequence</b>	MGRKKIQITRIMDERNRQVTFTKRKFGLMKKAYELSVLCDCEIALIIFNSSNKLQYAS TDMDKVLKYTEYNEPHESRTNSDIVEALNKKEHRGCDSPDPDTSYVLTPTHTEEKYK KINEEFDNMMRNHKKIAPGLPPQNFMSVTVPVTSNALSNTNPGSSLVSPSLAASST LTDSSMLSPQTTLHRNVSPGAPQRPPSTGNAGGMLSTTDLTPNGAGSSPVGNG FVNSRASP NLIGATGANS LGVMPTKSPPPP GGNLGMNSRKPDLRVVIPSSKGM MPPLNTQRISSSQATQPLATPVVSVTTPSLPPQGLVYSAMPTAYNTDYSLSADLSA

 Tel: 1-631-559-9269    1-516-512-3133

 Email: [info@creative-biomart.com](mailto:info@creative-biomart.com)     Fax: 1-631-938-8127

 45-1 Ramsey Road, Shirley, NY 11967, USA

LQGFNSPGMLSLGQVSAWQQHHLGQAALSSLVAGGQLSQQSNLSINTNQNISIKSE  
 PISPPRDRMTPSGFQQQQQQQQQQPPPPPPQPQPQPQPQPRQEMGRSPVDSL  
 SSSSSSYDGSREDPRGDFHSPIVLGRPPNTEDRESPSVKRMMDAWVTSGPTRT  
 RRLEQKLISEEDLAANDILDYKDDDDKV

**Purity** > 80% as determined by SDS-PAGE and Coomassie blue staining

**Stability** Stable for 3 months from receipt of products under proper storage and handling conditions.

**Storage** Store at -80 centigrade. Avoid repeated freeze-thaw cycles.

**Concentration** 50 µg/mL as determined by BCA

**Storage Buffer** 100 mM glycine, 25 mM Tris-HCl, pH 7.3.

## GENE INFORMATION

**Gene Name** MEF2A myocyte enhancer factor 2A [ Homo sapiens (human) ]

**Official Symbol** MEF2A

**Synonyms** MEF2A; myocyte enhancer factor 2A; myocyte-specific enhancer factor 2A; serum response factor-like protein 1; MADS box transcription enhancer factor 2, polypeptide A (myocyte enhancer factor 2A); mef2; ADCAD1; RSRFC4; RSRFC9;

**Gene ID** 4205

**mRNA Refseq** NM\_005587

**Protein Refseq** NP\_005578

 Tel: 1-631-559-9269 1-516-512-3133

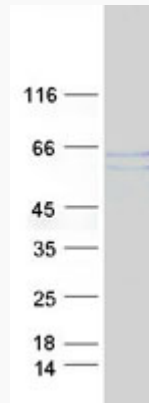
 Email: [info@creative-biomart.com](mailto:info@creative-biomart.com)  Fax: 1-631-938-8127

 45-1 Ramsey Road, Shirley, NY 11967, USA

**MIM** 600660

**UniProt ID** Q02078

**SDS-PAGE**



 Tel: 1-631-559-9269 1-516-512-3133

 Email: [info@creative-biomart.com](mailto:info@creative-biomart.com)  Fax: 1-631-938-8127

 45-1 Ramsey Road, Shirley, NY 11967, USA