

Recombinant Human MEF2A Protein, GST-tagged

Cat. No. MEF2A-4462H Lot. No. (See product label)

SPECIFICATION

Product Overview	Human MEF2A full-length ORF (AAH13437, 1 a.a. - 499 a.a.) recombinant protein with GST-tag at N-terminal.
Species	Human
Source	Wheat Germ
Description	<p>The process of differentiation from mesodermal precursor cells to myoblasts has led to the discovery of a variety of tissue-specific factors that regulate muscle gene expression. The myogenic basic helix-loop-helix proteins, including myoD (MIM 159970), myogenin (MIM 159980), MYF5 (MIM 159990), and MRF4 (MIM 159991) are one class of identified factors. A second family of DNA binding regulatory proteins is the myocyte-specific enhancer factor-2 (MEF2) family. Each of these proteins binds to the MEF2 target DNA sequence present in the regulatory regions of many, if not all, muscle-specific genes. The MEF2 genes are members of the MADS gene family (named for the yeast mating type-specific transcription factor MCM1, the plant homeotic genes agamous and deficiens and the human serum response factor SRF (MIM 600589)), a family that also includes several homeotic genes and other transcription factors, all of which share a conserved DNA-binding domain.[supplied by OMIM</p>
Molecular Mass	80.41 kDa
AA Sequence	MGRKKIQITRIMDERNRQVTFTRKRFGLMKKAYELSVLCDCEIALIIFNSSNKLQFYAS

 Tel: 1-631-559-9269 1-516-512-3133

 Email: info@creative-biomart.com  Fax: 1-631-938-8127

 45-1 Ramsey Road, Shirley, NY 11967, USA

TDMDKVLLKYTEYNEPHESRTNSDIVEALNKKEHRGCDSPDPDTSYVLTPTHTEEKYK
 KINEEFDNMMRNHKKIAPGLPPQNFMSVTVPVVTSPNALSNTNPGSSLVSPSLAASST
 LTDSSMLSPQTTLHRNVSPGAPQRPPSTGNAGGMLSTTDLTPNGAGSSPVGNG
 FVNSRASP NLIGATGANS LGKVMPTKSPPPP GGNLGMNSRRPDLR VVIPSSKGM
 MPPLNTQRISSSQATQPLATPVVSVTTPSLPPQGLVYSAMPTAYNTDYSLTSADLSA
 LQGFNSPGMLSLGQVSAWQQHHLGQAALSSLVAGGQLSQGSNLSINTNQNISIKSE
 PISPPRDRMTPSGFQQQQQQQQQQPPPPPPQPQPQPQPQPRQEMGRSPVDSL
 SSSSSSYDGS DREDPRGDFHSPIVLGRPPNTEDRESPSVKRM RMDAWVT

Applications

Enzyme-linked Immunoabsorbent Assay
 Western Blot (Recombinant protein)
 Antibody Production
 Protein Array

Notes

Best use within three months from the date of receipt of this protein.

Storage

Store at -80 centigrade. Aliquot to avoid repeated freezing and thawing.

Storage Buffer

50 mM Tris-HCl, 10 mM reduced Glutathione, pH=8.0 in the elution buffer.

GENE INFORMATION

Gene Name

MEF2A myocyte enhancer factor 2A [Homo sapiens]

Official Symbol

MEF2A

Synonyms

MEF2A; myocyte enhancer factor 2A; myocyte-specific enhancer factor 2A; serum response factor-like protein 1; MADS box transcription enhancer factor 2, polypeptide A (myocyte enhancer factor 2A); mef2; ADCAD1; RSRFC4; RSRFC9;

Gene ID

4205

 Tel: 1-631-559-9269 1-516-512-3133

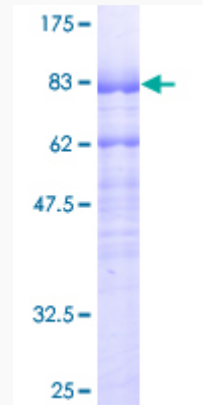
 Email: info@creative-biomart.com  Fax: 1-631-938-8127

 45-1 Ramsey Road, Shirley, NY 11967, USA

mRNA Refseq NM_001130926

Protein Refseq NP_001124398

**Quality Control
Testing**



12.5% SDS-PAGE Stained with Coomassie Blue

 Tel: 1-631-559-9269 1-516-512-3133

 Email: info@creative-biomart.com  Fax: 1-631-938-8127

 45-1 Ramsey Road, Shirley, NY 11967, USA