

## Recombinant Human MEF2A Protein, His-tagged

Cat. No. MEF2A-5258H Lot. No. (See product label)

### SPECIFICATION

<b>Product Overview</b>	Recombinant human MEF2A protein ( 1-499 aa) was expressed in E. coli with His-tag.
<b>Species</b>	Human
<b>Source</b>	E.coli
<b>ProteinLength</b>	1-499 a.a.
<b>Form</b>	PBS
<b>Molecular Mass</b>	54.67 kDa
<b>Purity</b>	>90%
<b>Applications</b>	ELISA, WB, Antibody Production, Protein array
<b>Storage</b>	Frozen / Solution. For extended storage, conserve at -80 centigrade. Repeated freezing and thawing is not recommended. Store working aliquots at 4 centigrade for up to one week.

### GENE INFORMATION

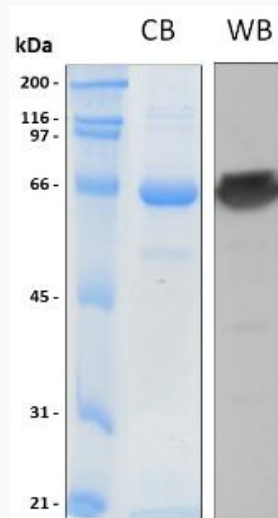
**Gene Name** MEF2A myocyte enhancer factor 2A [ Homo sapiens ]

 Tel: 1-631-559-9269 1-516-512-3133

 Email: [info@creative-biomart.com](mailto:info@creative-biomart.com)  Fax: 1-631-938-8127

 45-1 Ramsey Road, Shirley, NY 11967, USA

<b>Official Symbol</b>	MEF2A
<b>Synonyms</b>	mef2; ADCAD1; RSRFC4; RSRFC9
<b>Gene ID</b>	4205
<b>mRNA Refseq</b>	NM_001130926
<b>Protein Refseq</b>	NP_001124398
<b>MIM</b>	600660



Tel: 1-631-559-9269 1-516-512-3133

Email: [info@creative-biomart.com](mailto:info@creative-biomart.com) Fax: 1-631-938-8127

45-1 Ramsey Road, Shirley, NY 11967, USA