

## Recombinant Human MEF2C Protein, GST-tagged

Cat. No. MEF2C-4455H Lot. No. (See product label)

### SPECIFICATION

**Product Overview** Human MEF2C full-length ORF ( AAH26341.1, 1 a.a. - 469 a.a.) recombinant protein with GST-tag at N-terminal.

**Species** Human

**Source** Wheat Germ

**Description** This locus encodes a member of the MADS box transcription enhancer factor 2 (MEF2) family of proteins, which play a role in myogenesis. The encoded protein, MEF2 polypeptide C, has both trans-activating and DNA binding activities. This protein may play a role in maintaining the differentiated state of muscle cells. Mutations and deletions at this locus have been associated with severe mental retardation, stereotypic movements, epilepsy, and cerebral malformation. Alternatively spliced transcript variants have been described. [provided by RefSeq, Jul 2010]

**Molecular Mass** 77.3 kDa

**AA Sequence**

```
MGRKKIQITRIMDERNRQVTFTRKRFGLMKKAYELSVLCDCEIALIIFNSTNKLQFYAS
TDMDKVLLKYTEYNEQHESRTNSDIVETLRKKGLNGCDSPDPDADDSVGHSPESD
KYRKINEDIDLISRQRLCAVPPPNFEMPVSIPVSSHNSLVYSNPVSSLGNPNLLPLA
HPSLQRNSMSPGVTHRPPSAGNTGGLMGGDLTSGAGTSAGNGYGNPRNSPGLLV
SPGNLNKNMQAKSPPPMNLGMNMRKPDRLVLIPPGSKNTMPSVSEDVDLLLNRIN
NSQSAQSLATPVVSVATPTLPGQGMGGYPSAISTTYGTEYSLSSADLSSLSGFNTAS
ALHLGSVTGWQQQHLHNMQPSALSQLGACTSTHLSQSSNLSLPSTQSLNIKSEPV
```

 Tel: 1-631-559-9269 1-516-512-3133

 Email: [info@creative-biomart.com](mailto:info@creative-biomart.com)  Fax: 1-631-938-8127

 45-1 Ramsey Road, Shirley, NY 11967, USA

PPRDRTTTPSRYPQHTRHEAGRSPVDSLSSCSSSYDGSREDHRNEFHSPIGLTRP  
SPDERESPSVKRMRLSE

<b>Applications</b>	Enzyme-linked Immunoabsorbent Assay Western Blot (Recombinant protein) Antibody Production Protein Array
<b>Notes</b>	Best use within three months from the date of receipt of this protein.
<b>Storage</b>	Store at -80 centigrade. Aliquot to avoid repeated freezing and thawing.
<b>Storage Buffer</b>	50 mM Tris-HCl, 10 mM reduced Glutathione, pH=8.0 in the elution buffer.

## GENE INFORMATION

<b>Gene Name</b>	MEF2C myocyte enhancer factor 2C [ Homo sapiens ]
<b>Official Symbol</b>	MEF2C
<b>Synonyms</b>	MEF2C; myocyte enhancer factor 2C; myocyte-specific enhancer factor 2C; MADS box transcription enhancer factor 2, polypeptide C; C5DELq14.3; DEL5q14.3;
<b>Gene ID</b>	4208
<b>mRNA Refseq</b>	NM_001131005
<b>Protein Refseq</b>	NP_001124477
<b>MIM</b>	600662

 Tel: 1-631-559-9269 1-516-512-3133

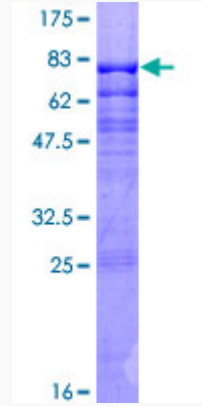
 Email: [info@creative-biomart.com](mailto:info@creative-biomart.com)  Fax: 1-631-938-8127

 45-1 Ramsey Road, Shirley, NY 11967, USA


UniProt ID

Q06413

Quality Control  
Testing



12.5% SDS-PAGE Stained with Coomassie Blue

 Tel: 1-631-559-9269 1-516-512-3133

 Email: [info@creative-biomart.com](mailto:info@creative-biomart.com)  Fax: 1-631-938-8127

 45-1 Ramsey Road, Shirley, NY 11967, USA