

Recombinant Human MEF2C protein, His-tagged

Cat. No. MEF2C-5644H Lot. No. (See product label)

SPECIFICATION

Product Overview	Recombinant Human MEF2C protein(125-469 aa), fused with N-terminal His tag, was expressed in E.coli.
Species	Human
Source	E.coli
ProteinLength	125-469 aa
Form	The purified protein was lyophilized from sterile phosphate-buffered saline (PBS: 58 mM Na ₂ HPO ₄ , 17 mM NaH ₂ PO ₄ , 68 mM NaCl, pH 7.4). Prior to lyophilization, 5% (w/v) trehalose and 5% (w/v) mannitol were incorporated as cryoprotective excipients. The protein was eluted with a buffer containing 300 mM imidazole.
AASequence	<p> DLMISRQRLCAVPPPNFEMPVSIPVSSHNSLVYSNPVSSLGNPNLLPLAHPSLQRNS MSPGVTHRPPSAGNTGGLMGGDLTSGAGTSAGNGYGNPRNSPGLLVSPGNLNKN MQAKSPPPMNLGMNNRKPDLRVLIPPGSKNTMPSVSEDVLLLLNQRINNSQSAQSL ATPVVSVATPTLPGQGMGGYPSAISTTYGTEYSLSADLSSLSGFNTASALHLGSVT GWQQQHLHNMQPSALSQLGACTSTHLSQSSNLSLPSTQSLNIKSEPVSPPRDRTTT PSRYPQHTRHEAGRSPVDSLSSCSSSYDGSDREDHRNEFHSPIGLTRPSPDERESP SVKRMRLSE </p>
Purity	85%, by SDS-PAGE with Coomassie Brilliant Blue staining.
Storage	Store at 2-8°C for 1-2 weeks. Aliquot and store at -20°C to -80°C for up to 3 months,

 Tel: 1-631-559-9269 1-516-512-3133

 Email: info@creative-biomart.com  Fax: 1-631-938-8127

 45-1 Ramsey Road, Shirley, NY 11967, USA

reconstitution with sterile water and addition of an equal volume of glycerol. Avoid repeat freeze-thaw cycles.

Reconstitution

Dissolve the product in 200 µl sterile water to achieve a working concentration of 0.25 g/µl. If experimental compatibility allows, mix the aqueous solution with an equal volume of glycerol (1:1 ratio) after initial reconstitution.

GENE INFORMATION

Gene Name	MEF2C myocyte enhancer factor 2C [Homo sapiens]
Official Symbol	MEF2C
Synonyms	MEF2C; myocyte enhancer factor 2C; myocyte-specific enhancer factor 2C; MADS box transcription enhancer factor 2, polypeptide C; C5DELq14.3; DEL5q14.3;
Gene ID	4208
mRNA Refseq	NM_001131005
Protein Refseq	NP_001124477
MIM	600662
UniProt ID	Q06413

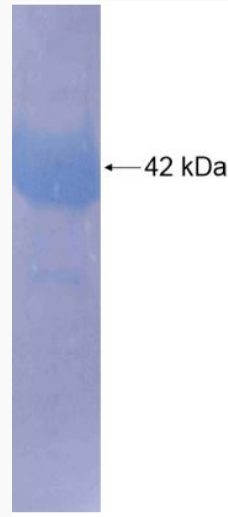
 Tel: 1-631-559-9269 1-516-512-3133

 Email: info@creative-biomart.com  Fax: 1-631-938-8127

 45-1 Ramsey Road, Shirley, NY 11967, USA



SDS-PAGE



Tel: 1-631-559-9269 1-516-512-3133

Email: info@creative-biomart.com Fax: 1-631-938-8127

45-1 Ramsey Road, Shirley, NY 11967, USA