

# Recombinant Human MEF2D Protein, MYC/DDK-tagged, C13 and N15-labeled

**Cat. No.** MEF2D-308H    **Lot. No.** (See product label)

## SPECIFICATION

<b>Product Overview</b>	MEF2D MS Standard C13 and N15-labeled recombinant protein (NP_005911) with a C-terminal MYC/DDK tag, was expressed in HEK293 cells.
<b>Species</b>	Human
<b>Source</b>	HEK293
<b>Description</b>	<p>This gene is a member of the myocyte-specific enhancer factor 2 (MEF2) family of transcription factors. Members of this family are involved in control of muscle and neuronal cell differentiation and development, and are regulated by class II histone deacetylases. Fusions of the encoded protein with Deleted in Azoospermia-Associated Protein 1 (DAZAP1) due to a translocation have been found in an acute lymphoblastic leukemia cell line, suggesting a role in leukemogenesis. The encoded protein may also be involved in Parkinson disease and myotonic dystrophy. Alternative splicing results in multiple transcript variants. [provided by RefSeq, Oct 2012]</p>
<b>Molecular Mass</b>	55.9 kDa
<b>AA Sequence</b>	<p>MGRKKIQIRITDERNRQVTFTKRKFGLMKKAYELSVLCDCEIALIIFNHSNKLQYAS            TDMDKVLLKYTEYNEPHESRTNADIETLRKKGFNGCDSPEPDGDSLEQSPLLEDK            YRRASEELDGLFRRYGSTVPAPNFAMPVTVPSVSNQSSLQFSNPSGSLVTPSLVTSS            LTDPRLLSPQQPALQRNSVSPGLPQRPASAGAMLGGDLNSANGACPSVGNQYVS</p>

 Tel: 1-631-559-9269    1-516-512-3133

 Email: [info@creative-biomart.com](mailto:info@creative-biomart.com)     Fax: 1-631-938-8127

 45-1 Ramsey Road, Shirley, NY 11967, USA

ARASPGLLPVANGNSLNKVIPAKSPPPPTHSTQLGAPSRKPDLRVITSQAGKGLMHH  
 LTEDHLDLNNQRLGVSQSTHSLTTPVVSVATPSLLSQGLPFSSMPTAYNTDYQLTS  
 AELSSLPAFSSPGGLSLGNVTAWQQPQQPQQPQQPQQPPQQQPPQPQQPQQP  
 QQPQQPPQQSHLVPVSLSNLIPGSPLPHVGAALTVTTHPHISIKSEPVSPSRERSP  
 APPPPAVFPAARPEPGDGLSSPAGGSYETGDRDDGRGDFGPTLGLLRPAPEPEAE  
 GSAVKRMRLDTWTLKTRTRPLEQKLISEEDLAANDILDYKDDDDKV

<b>Purity</b>	> 80% as determined by SDS-PAGE and Coomassie blue staining
<b>Stability</b>	Stable for 3 months from receipt of products under proper storage and handling conditions.
<b>Storage</b>	Store at -80 centigrade. Avoid repeated freeze-thaw cycles.
<b>Concentration</b>	50 µg/mL as determined by BCA
<b>Storage Buffer</b>	100 mM glycine, 25 mM Tris-HCl, pH 7.3.

## GENE INFORMATION

<b>Gene Name</b>	MEF2D myocyte enhancer factor 2D [ Homo sapiens (human) ]
<b>Official Symbol</b>	MEF2D
<b>Synonyms</b>	MEF2D; myocyte enhancer factor 2D; myocyte-specific enhancer factor 2D; MEF2D/DAZAP1 fusion; MADS box transcription enhancer factor 2, polypeptide D (myocyte enhancer factor 2D); myocyte enhancer factor 2D/deleted in azoospermia associated protein 1 fusion protein; DKFZp686l1536;
<b>Gene ID</b>	4209

 Tel: 1-631-559-9269 1-516-512-3133

 Email: [info@creative-biomart.com](mailto:info@creative-biomart.com)  Fax: 1-631-938-8127

 45-1 Ramsey Road, Shirley, NY 11967, USA

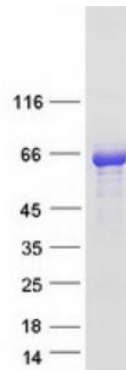
mRNA Refseq [NM\\_005920](#)

Protein Refseq [NP\\_005911](#)

MIM [600663](#)

UniProt ID [Q14814](#)

#### SDS-PAGE



 Tel: 1-631-559-9269 1-516-512-3133

 Email: [info@creative-biomart.com](mailto:info@creative-biomart.com)  Fax: 1-631-938-8127

 45-1 Ramsey Road, Shirley, NY 11967, USA