

# Recombinant Full Length Human MEF2D Protein

Cat. No. MEF2D-598HFL Lot. No. (See product label)

## SPECIFICATION

<b>Product Overview</b>	Recombinant Full Length Human MEF2D Protein, fused to Flag-tag at C-terminus, was expressed in Mammalian cells.
<b>Species</b>	Human
<b>Source</b>	Mammalian Cells
<b>ProteinLength</b>	1-521 a.a.
<b>Description</b>	This gene is a member of the myocyte-specific enhancer factor 2 (MEF2) family of transcription factors. Members of this family are involved in control of muscle and neuronal cell differentiation and development, and are regulated by class II histone deacetylases. Fusions of the encoded protein with Deleted in Azoospermia-Associated Protein 1 (DAZAP1) due to a translocation have been found in an acute lymphoblastic leukemia cell line, suggesting a role in leukemogenesis. The encoded protein may also be involved in Parkinson disease and myotonic dystrophy. Alternative splicing results in multiple transcript variants.
<b>Form</b>	25 mM Tris HCl, pH 7.3, 100 mM glycine, 10% glycerol.
<b>Molecular Mass</b>	55.8 kDa
<b>AA Sequence</b>	MGRKKIQQRITDERNRQVTFTRKRFGLMKKAYELSVLCDCEIALIIFNHSNKLQYAS TDMDKVLLKYT EYNEPHESRTNADIETLRKKGFNGCDSPEPDGEDSLEQSPLEDK YRRASEELDGLFRRYGSTVPAPNF AMPVTVPVSNQSSLQFSNPSGSLVTPSLVTSS

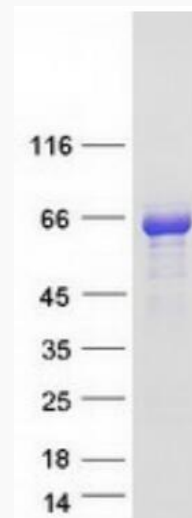
 Tel: 1-631-559-9269 1-516-512-3133

 Email: [info@creative-biomart.com](mailto:info@creative-biomart.com)  Fax: 1-631-938-8127

 45-1 Ramsey Road, Shirley, NY 11967, USA



<b>Synonyms</b>	DKFZp686I1536
<b>Gene ID</b>	4209
<b>mRNA Refseq</b>	NM_005920.4
<b>Protein Refseq</b>	NP_005911.1
<b>MIM</b>	600663
<b>UniProt ID</b>	Q14814



Coomassie blue staining of purified MEF2D protein.

 Tel: 1-631-559-9269 1-516-512-3133

 Email: [info@creative-biomart.com](mailto:info@creative-biomart.com)  Fax: 1-631-938-8127

 45-1 Ramsey Road, Shirley, NY 11967, USA