

Recombinant Human MEF2D protein, GST-tagged

Cat. No. MEF2D-818H Lot. No. (See product label)

SPECIFICATION

Product Overview	Recombinant Human MEF2D protein(165-514 aa), fused with N-terminal GST tag, was expressed in E. coli.
Species	Human
Source	E.coli
ProteinLength	165-514 aa
Tag	N-GST
Form	The purified protein was Lyophilized from sterile PBS (58mM Na ₂ HPO ₄ , 17mM NaH ₂ PO ₄ , 68mM NaCl, pH8.). 5 % trehalose and 5 % mannitol are added as protectant before lyophilization. The elution buffer contain 100mM GSH.
Purity	85%, by SDS-PAGE with Coomassie Brilliant Blue staining.
Storage	Short-term storage: Store at 2-8°C for (1-2 weeks). Long-term storage: Aliquot and store at -20°C to -80°C for up to 3 months, reconstitution with sterile water and addition of an equal volume of glycerol. Avoid repeat freeze-thaw cycles.
Reconstitution	Reconstitute at 0.25 µg/µl in 200 µl sterile water for short-term storage. After reconstitution with sterile water, if glycerol has no effect on subsequent experiments, it is recommended to add an equal volume of glycerol for long-term

 Tel: 1-631-559-9269 1-516-512-3133

 Email: info@creative-biomart.com  Fax: 1-631-938-8127

 45-1 Ramsey Road, Shirley, NY 11967, USA

storage.

AA Sequence

TPSLVTSSLTDPRLSPQQPALQRNSVSPGLPQRPASAGAMLGGDLNSANGACPSP
 VGNGYVSARASPGLLPVANGNSLNKVIPAKSPPPPTHSTQLGAPSRKPDLRVITSQA
 GKGLMHHLNNAQRLGVSQSTHSLTTPVVS VATPSLLSQGLPFSSMPTAYNTDYQLT
 SAELSSLP AFSSPGGLSLGNVTAWQQPQQPQQPQQPQQPQQPQQPQQPQQPQQ
 PQQPQQPQQQSHLVPVLSNLIPGSPLPHVGAALTVTTHPHISIKSEPVSPSRERS
 PAPP PAVFPAARPEPGDGLSSPAGGSYETGDRDDGRGDFGPTLGLLRPAPEPEA
 EGS AVKRMRLDTWTLK

GENE INFORMATION

Gene Name [MEF2D myocyte enhancer factor 2D \[Homo sapiens \]](#)

Official Symbol [MEF2D](#)

Synonyms

MEF2D; myocyte enhancer factor 2D; myocyte-specific enhancer factor 2D;
 MEF2D/DAZAP1 fusion; MADS box transcription enhancer factor 2, polypeptide D
 (myocyte enhancer factor 2D); myocyte enhancer factor 2D/deleted in azoospermia
 associated protein 1 fusion protein; DKFZp686l1536;

Gene ID [4209](#)

mRNA Refseq [NM_005920](#)

Protein Refseq [NP_005911](#)

MIM [600663](#)

UniProt ID [Q14814](#)

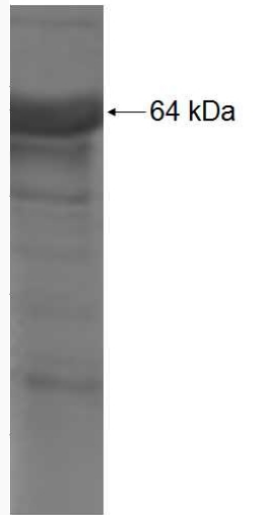
 Tel: 1-631-559-9269 1-516-512-3133

 Email: info@creative-biomart.com  Fax: 1-631-938-8127

 45-1 Ramsey Road, Shirley, NY 11967, USA



SDS-PAGE



Tel: 1-631-559-9269 1-516-512-3133

Email: info@creative-biomart.com Fax: 1-631-938-8127

45-1 Ramsey Road, Shirley, NY 11967, USA