

Recombinant Human MEGF6 Protein, Myc/DDK-tagged, C13 and N15-labeled

Cat. No. MEGF6-1642H **Lot. No.** (See product label)

SPECIFICATION

Product Overview	MEGF6 MS Standard C13 and N15-labeled recombinant protein (NP_001400) with a C-terminal MYC/DDK tag, was expressed in HEK293 cells.
Species	Human
Source	HEK293
Description	MEGF6 (Multiple EGF Like Domains 6) is a Protein Coding gene. Gene Ontology (GO) annotations related to this gene include calcium ion binding. An important paralog of this gene is MEGF11.
Molecular Mass	161.6 kDa
AA Sequence	MSFLEEARAAGRAVVLALVLLLLPAVPVGASVPPRPLLPLQPGMPHVCAEQELTLVG RRQPCVQALSHTVPVWKAGCGWQAWCVGHERRTVYYMGYRQVYTTEARTVLR CRGWMQQPDEEGCLSAECSASLCFHGGRCVPGSAQPCHCPPGFQGPCCQYD ECRTHNGGCQHRCVNTPGSYLCECKPGFRLHTDSRTCLAINSCALGNGGCQHHC QLTITRHRQCRCRPGFQLQEDGRHCVRRSPCANRNGSCMHRQVVRGLARCECH GYQLAADGKACEDVDECAAGLAQCAHGCLNTQGSFKCVCHAGYELGADGRQCYRI EMEIVNSCEANNGGCSHGCSHTSAGPLCTCPRGYELDTDQRTCIDVDDCADSPCC QQVCTNPNPGGYECGCYAGYRLSADGCGCEDVDECASSRGGCEHHCTNLAGSFQC SCEAGYRLHEDRRGCSPLEPMVDLDGELPFVVRPLPHIAVLQDELPLFQDDDDVGA DEEEAELRGEHTLTEKFVCLDDSFHDCSLTCDDCRNGGTCLLGLDGDCPEGWT

 Tel: 1-631-559-9269 1-516-512-3133

 Email: info@creative-biomart.com  Fax: 1-631-938-8127

 45-1 Ramsey Road, Shirley, NY 11967, USA

GLICNETCPPDTFGKNCSFSCSCQNGGTCD SVTGACRCPPGVSGTNCEDGCPKGY
 YGKHCRKKCN CANRGRCHRLYGACLDPGLYGRFCHLTCPPWAFGPGCSEECQC
 VQPHTQSCDKRDGSCSCKAGFRGERCQAECELGYFGPGCWQACTCPVGVACDS
 VSGECGKRCPAGFQGEDCGQECPVGTFGVNCSSSSCSGGAPCHGVTGQCRCPP
 GRTGEDCEADCPEGRWGLGCQEICPACQHAARCDPETGACLCLPGFVGSRCQDV
 CPAGWYGPSCQTRCSCANDGHCHPATGHCSCAPGWTGFSCQRACDTGHWGPD
 CSHPCNCSAGHGSCDAISGLCLCEAGYVGPRCEQQCPQGHFGPGCEQRCQCQH
 GAACDHVSGACTCPAGWRGTFCEHACPAFFGLDCRSACNCTAGAACDAVNGSC
 LCPAGRRGPRCAETCPAHTYGHNCSQACACFNGASCDPVHGQCHCAPGWMGPS
 CLQACPAGLYGDNCRHSCLCQNGGTCDPVSGHCACPEGWAGLACEKECLPRDVR
 AGCRHSGGCLNGGLCDPHTGRCLCPAGWTGDKCQSPCLRGWFGEACAQRCSCP
 PGAACHHVTGACRCPPGFTGSGCEQACPPGSGFGEDCAQMCQCPGENPACHPAT
 GTCSCAAGYHG PSCQQRCPPGRYGP GCEQLCGCLNGGSCDAATGACRCPTGFLG
 TDCNLTCPQGRFGPNCTHVCGCGQAACDPVTGTCLCPPGRAGVRCERGCQPQR
 FGVGCEHTCSCRNGGLCHASNGSCSGLGWTGRHCELACPPGRYGAACHLECS
 HNNSTCEPATGTCRCGPGFYGQACEHPCPPGFHAGCQGLCWCQH GAPCDPISG
 RCLCPAGFHGHFCERGCEPGSFGEGCHQRCD CDGGAPCDPVTGLCLCPPGRSGA
 TCNLDCRRGQFGP SCTLHCD CGGGADCDPVSGQCHCVDGYMGPTCREGGPLRLP
 ENPSLAQGSAGTLPASSRPTSRS GGP ARHTRTRPLEQKLISEEDLAANDILDYKDDD
 DKV

Purity > 80% as determined by SDS-PAGE and Coomassie blue staining

Stability Stable for 3 months from receipt of products under proper storage and handling conditions.

Storage Store at -80 centigrade. Avoid repeated freeze-thaw cycles.

Concentration 50 µg/mL as determined by BCA

 Tel: 1-631-559-9269 1-516-512-3133

 Email: info@creative-biomart.com  Fax: 1-631-938-8127

 45-1 Ramsey Road, Shirley, NY 11967, USA

Storage Buffer 100 mM glycine, 25 mM Tris-HCl, pH 7.3.

GENE INFORMATION

Gene Name MEGF6 multiple EGF like domains 6 [Homo sapiens (human)]

Official Symbol MEGF6

Synonyms MEGF6; multiple EGF like domains 6; EGFL3; multiple epidermal growth factor-like domains protein 6; EGF-like protein 3; EGF-like-domain, multiple 3; epidermal growth factor-like protein 3; multiple EGF-like domains protein 6

Gene ID 1953

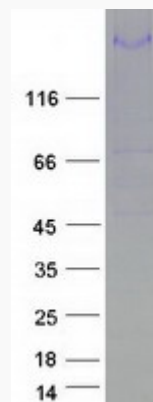
mRNA Refseq NM_001409

Protein Refseq NP_001400

MIM 604266

UniProt ID O75095

SDS-PAGE



Tel: 1-631-559-9269 1-516-512-3133

Email: info@creative-biomart.com Fax: 1-631-938-8127

45-1 Ramsey Road, Shirley, NY 11967, USA