

# Recombinant Full Length Human MEIS2 Protein transcript variant d, C-Flag-tagged

Cat. No. MEIS2-19HFL Lot. No. (See product label)

## SPECIFICATION

<b>Product Overview</b>	Recombinant Full Length Human MEIS2 Protein transcript variant d, fused to Flag-tag at C-terminus, was expressed in HEK293T.
<b>Species</b>	Human
<b>Source</b>	HEK293
<b>Description</b>	This gene encodes a homeobox protein belonging to the TALE ('three amino acid loop extension') family of homeodomain-containing proteins. TALE homeobox proteins are highly conserved transcription regulators, and several members have been shown to be essential contributors to developmental programs. Multiple transcript variants encoding distinct isoforms have been described for this gene.
<b>Form</b>	25 mM Tris-HCl, 100 mM glycine, pH 7.3, 10% glycerol.
<b>Molecular Mass</b>	50.9 kDa
<b>AA Sequence</b>	MAQRYDELPHYGGMDGVGVPASMYGDPHAPRPIPPVHHLNHGPPLHATQHYGAH APHPNVMPASMGSAVNDALKRDKDAIYGHPLFPLLALVFEKCELATCTPREPGVAG GDVCSDDSFNEDIAVFAKQVRAEKPLFSSNPELDNLMIQAIQVLRFHLLLELEKVELC DNFCHRYISCLKGKMPIDLVIDERDGSSKSDHEELSGSSTNLADHNPSSWRDHDDA TSTHSAGTPGPSSGGHASQSGDNSSEQQDGLDNSVASPGTGDDDDDPDKDKKRQK KRGIFPKVATNIMRAWLRFQHLTHPYPSEEQKKQLAQDTGLTILQVNNWFINARRRIV QPMIDQSNRAVSQGAAYSPEGQPMGFSVLDGQQHMGIRPAGLQSMPGDYVSQGG

 Tel: 1-631-559-9269 1-516-512-3133

 Email: [info@creative-biomart.com](mailto:info@creative-biomart.com)  Fax: 1-631-938-8127

 45-1 Ramsey Road, Shirley, NY 11967, USA



PMGMSMAQPSYTPPQMTPHPTQLRHGPPMHSYLPSPHHPAMMMHGGPPTH  
PG  
MTMSAQSPTMLNSVDPNVGGQVMDIHAQ TRTRPLEQKLISEEDLAANDILDYKDD  
DKV

**Purity** > 80% as determined by SDS-PAGE and Coomassie blue staining.

**Notes** For testing in cell culture applications, please filter before use. Note that you may experience some loss of protein during the filtration process.

**Storage** Store at -80 centigrade.

**Concentration** >0.05 µg/µL as determined by microplate BCA method.

**Use/Stability** Stable for 12 months from the date of receipt of the product under proper storage and handling conditions. Avoid repeated freeze-thaw cycles.

## GENE INFORMATION

**Gene Name** MEIS2 Meis homeobox 2 [ Homo sapiens (human) ]

**Official Symbol** MEIS2

**Synonyms** MEIS2; Meis homeobox 2; CPCMR; HsT18361; MRG1

**Gene ID** 4212

**mRNA Refseq** NM\_002399.4

**Protein Refseq** NP\_002390.1

**MIM** 601740

Tel: 1-631-559-9269 1-516-512-3133

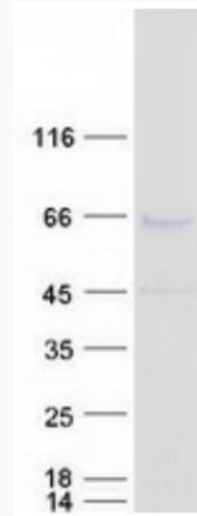
Email: [info@creative-biomart.com](mailto:info@creative-biomart.com) Fax: 1-631-938-8127

45-1 Ramsey Road, Shirley, NY 11967, USA

UniProt ID

O14770

SDS-PAGE



Coomassie blue staining of purified MEIS2 protein.

 Tel: 1-631-559-9269 1-516-512-3133

 Email: [info@creative-biomart.com](mailto:info@creative-biomart.com)  Fax: 1-631-938-8127

 45-1 Ramsey Road, Shirley, NY 11967, USA