

Recombinant Human MEIS2 Protein(79-270 aa), His-tagged

Cat. No. MEIS2-3256H Lot. No. (See product label)

SPECIFICATION

Product Overview	Recombinant Human MEIS2 Protein(79-270 aa), fused with N-terminal His tag, was expressed in E. coli.
Species	Human
Source	E.coli
ProteinLength	79-270 aa
Form	The purified protein was Lyophilized from sterile PBS (58mM Na ₂ HPO ₄ , 17mM NaH ₂ PO ₄ , 68mM NaCl, pH7.4). 5 % trehalose and 5 % mannitol are added as protectant before lyophilization. The elution buffer contain 300mM imidazole.
AA Sequence	VFEKCELATCTPREPGVAGGDVCSDFNEDIAVFAKQVRAEKPLFSSNPELDNLMIQAIQVLRFHLLLEKVELCDNFCHRYISCLKGKMPIDLVIDERDGSKSDHEELSGSSTNLADHNPSSWRDHDDATSTHSAGTPGPSSGGHASQSGDNSSEQGDGLDNSVASPGTGDDDDDPDKDKKRQKRGIF
Purity	85%, by SDS-PAGE with Coomassie Brilliant Blue staining.
Storage	Short-term storage: Store at 2-8°C for (1-2 weeks). Long-term storage: Aliquot and store at -20°C to -80°C for up to 3 months, reconstitution with sterile water and addition of an equal volume of glycerol. Avoid repeat freeze-thaw cycles.
Reconstitution	Reconstitute at 0.25 µg/µl in 200 µl sterile water for short-term storage. After

 Tel: 1-631-559-9269 1-516-512-3133

 Email: info@creative-biomart.com  Fax: 1-631-938-8127

 45-1 Ramsey Road, Shirley, NY 11967, USA

reconstitution with sterile water, if glycerol has no effect on subsequent experiments, it is recommended to add an equal volume of glycerol for long-term storage.

GENE INFORMATION

Gene Name	MEIS2 Meis homeobox 2 [Homo sapiens]
Official Symbol	MEIS2
Synonyms	MEIS2; Meis homeobox 2; Meis (mouse) homolog 2 , Meis1, myeloid ecotropic viral integration site 1 homolog 2 (mouse); homeobox protein Meis2; HsT18361; MRG1; Meis homolog 2; Meis1-related gene 1; meis1-related protein 1; TALE homeobox protein Meis2; Meis1, myeloid ecotropic viral integration site 1 homolog 2; MGC2820
Gene ID	4212
mRNA Refseq	NM_001220482
Protein Refseq	NP_001207411
MIM	601740
UniProt ID	O14770

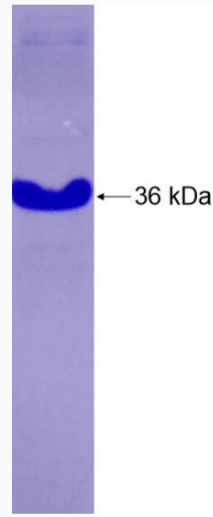
 Tel: 1-631-559-9269 1-516-512-3133

 Email: info@creative-biomart.com  Fax: 1-631-938-8127

 45-1 Ramsey Road, Shirley, NY 11967, USA



SDS-PAGE



Tel: 1-631-559-9269 1-516-512-3133

Email: info@creative-biomart.com Fax: 1-631-938-8127

45-1 Ramsey Road, Shirley, NY 11967, USA