

Recombinant Human MEIS2 Protein, GST-tagged

Cat. No. MEIS2-4451H Lot. No. (See product label)

SPECIFICATION

Product Overview	Human MEIS2 full-length ORF (AAH01516, 1 a.a. - 381 a.a.) recombinant protein with GST-tag at N-terminal.
Species	Human
Source	Wheat Germ
Description	This gene encodes a homeobox protein belonging to the TALE (three amino acid loop extension) family of homeodomain-containing proteins. TALE homeobox proteins are highly conserved transcription regulators, and several members have been shown to be essential contributors to developmental programs. Multiple transcript variants encoding distinct isoforms have been described for this gene. [provided by RefSeq]
Molecular Mass	67.65 kDa
AA Sequence	MDGVGVPASMYGDPHAPRPIPPVHHLNHGPPLHATQHYGAHAPHPNVMPASMGS AVNDALKRDKDAIYGHPLFLLALVFEKCELATCTPREPGVAGGDVCSDFSFNEDIA VFAKQVRAEKPLFSSNPELDNLMIQAIQVLRFHLLLELEKVHELCDNFCHRYISCLKGK MPIDLVIDERDGSSKSDHEELSGSSTNLADHNPSSWRDHDDATSTHSAGTPGPSSG GHASQSGDNSSEQGDGLDNSVASPGTGDDDDDPDKDKKRQKKRGIFPKVATNIMRA WLFQHLTHYPSEEQKKQLAQDTGLTILQVNNWFNARRRIVQPMIDQSNRAVSQG AAYSPEGQPMGSFVLDGQQHMGIRPAGPMSGMGMMMGMDGQWHYM
Applications	Enzyme-linked Immunoabsorbent Assay Western Blot (Recombinant protein)

 Tel: 1-631-559-9269 1-516-512-3133

 Email: info@creative-biomart.com  Fax: 1-631-938-8127

 45-1 Ramsey Road, Shirley, NY 11967, USA

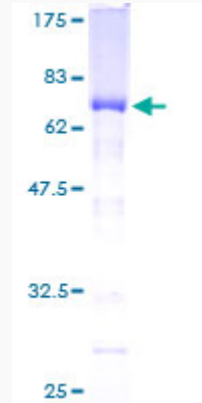
	Antibody Production Protein Array
Notes	Best use within three months from the date of receipt of this protein.
Storage	Store at -80 centigrade. Aliquot to avoid repeated freezing and thawing.
Storage Buffer	50 mM Tris-HCl, 10 mM reduced Glutathione, pH=8.0 in the elution buffer.
GENE INFORMATION	
Gene Name	MEIS2 Meis homeobox 2 [Homo sapiens]
Official Symbol	MEIS2
Synonyms	MEIS2; Meis homeobox 2; Meis (mouse) homolog 2 , Meis1, myeloid ecotropic viral integration site 1 homolog 2 (mouse); homeobox protein Meis2; HsT18361; MRG1; Meis homolog 2; Meis1-related gene 1; meis1-related protein 1; TALE homeobox protein Meis2; Meis1, myeloid ecotropic viral integration site 1 homolog 2; MGC2820;
Gene ID	4212
mRNA Refseq	NM_001220482
Protein Refseq	NP_001207411
MIM	601740
UniProt ID	O14770

 Tel: 1-631-559-9269 1-516-512-3133

 Email: info@creative-biomart.com  Fax: 1-631-938-8127

 45-1 Ramsey Road, Shirley, NY 11967, USA

**Quality Control
Testing**



12.5% SDS-PAGE Stained with Coomassie Blue

 Tel: 1-631-559-9269 1-516-512-3133

 Email: info@creative-biomart.com  Fax: 1-631-938-8127

 45-1 Ramsey Road, Shirley, NY 11967, USA