

Recombinant Human MEIS2 Protein, Myc/DDK-tagged, C13 and N15-labeled

Cat. No. MEIS2-488H Lot. No. (See product label)

SPECIFICATION

Product Overview	MEIS2 MS Standard C13 and N15-labeled recombinant protein (NP_733777) with a C-terminal MYC/DDK tag, was expressed in HEK293 cells.
Species	Human
Source	HEK293
Description	This gene encodes a homeobox protein belonging to the TALE ('three amino acid loop extension') family of homeodomain-containing proteins. TALE homeobox proteins are highly conserved transcription regulators, and several members have been shown to be essential contributors to developmental programs. Multiple transcript variants encoding distinct isoforms have been described for this gene.
Molecular Mass	43.6 kDa
AA Sequence	<p>MAQRYDELPHYGGMDGVGVPASMYGDPHAPRPIPPVHHLNHGPPLHATQHYGAH APHPNVMPASMGSAVNDALKRDKDAIYGHPLFLLALVFEKCELATCTPREPGVAG GDVCSSDSFNEDIAVFAKQVRAEKPLFSSNPELDNLMIQAIQVLRFHLLLEKVVHEL DNFCHRYISCLKKGMPIDLVIDERDGSSKSDHEELSGSSTNLADHNPSSWRDHDDA TSTHSAGTPGPSSGGHASQSGDNSSEQGDGLDNSVASPGTGDDDDPDKDKKRQK KRGIFPKVATNIMRAWLRFQHLTHPYPSEEQKKQLAQDTGLTILQVNNWFINARRRIV QPMIDQSNRAGFLLDPSVSQGAAYSPEGQPMGSFVLDGQQHMGIRPAGPMSGMG MNMGMDGQWHYMTRTRPLEQKLISEEDLAANDILDYKDDDDKV</p>

 Tel: 1-631-559-9269 1-516-512-3133

 Email: info@creative-biomart.com  Fax: 1-631-938-8127

 45-1 Ramsey Road, Shirley, NY 11967, USA

Purity	> 80% as determined by SDS-PAGE and Coomassie blue staining
Stability	Stable for 3 months from receipt of products under proper storage and handling conditions.
Storage	Store at -80 centigrade. Avoid repeated freeze-thaw cycles.
Concentration	50 µg/mL as determined by BCA
Storage Buffer	100 mM glycine, 25 mM Tris-HCl, pH 7.3.

GENE INFORMATION

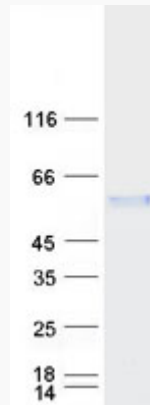
Gene Name	MEIS2 Meis homeobox 2 [Homo sapiens (human)]
Official Symbol	MEIS2
Synonyms	MEIS2; Meis homeobox 2; Meis (mouse) homolog 2, Meis1, myeloid ecotropic viral integration site 1 homolog 2 (mouse); homeobox protein Meis2; HsT18361; MRG1; Meis homolog 2; Meis1-related gene 1; meis1-related protein 1; TALE homeobox protein Meis2; Meis1, myeloid ecotropic viral integration site 1 homolog 2; MGC2820;
Gene ID	4212
mRNA Refseq	NM_170677
Protein Refseq	NP_733777
MIM	601740
UniProt ID	O14770

 Tel: 1-631-559-9269 1-516-512-3133

 Email: info@creative-biomart.com  Fax: 1-631-938-8127

 45-1 Ramsey Road, Shirley, NY 11967, USA

SDS-PAGE



 Tel: 1-631-559-9269 1-516-512-3133

 Email: info@creative-biomart.com  Fax: 1-631-938-8127

 45-1 Ramsey Road, Shirley, NY 11967, USA