

Recombinant Human MEIS2 Protein, Myc/DDK-tagged, C13 and N15-labeled

Cat. No. MEIS2-6151H Lot. No. (See product label)

SPECIFICATION

Product Overview	MEIS2 MS Standard C13 and N15-labeled recombinant protein (NP_733776) with a C-terminal MYC/DDK tag, was expressed in HEK293 cells.
Species	Human
Source	HEK293
Description	This gene encodes a homeobox protein belonging to the TALE ('three amino acid loop extension') family of homeodomain-containing proteins. TALE homeobox proteins are highly conserved transcription regulators, and several members have been shown to be essential contributors to developmental programs. Multiple transcript variants encoding distinct isoforms have been described for this gene.
Molecular Mass	51.1 kDa
AA Sequence	MAQRYDELPHYGGMDGVGVPASMYGDPHAPRPIPPVHHLNHGPPLHATQHYGAH APHPNVMPASMGSAVNDALKRDKDAIYGHPLFLLALVFEKCELATCTPREPGVAG GDVCSSDSFNEDIAVFAKQVRAEKPLFSSNPELDNLMIQAIQVLRFHLLLELEKVELC DNFCHRYISCLKGKMPIDLVIDERDGSSKSDHEELSGSSTNLADHNPSSWRDHDDA TSTHSAGTPGPSSGGHASQSGDNSSEQGDGLDNSVASPGTGDDDDPDKDKKRQK KRGIFPKVATNIMRAWLRFQHLTHPYPSEEQKKQLAQDTGLTILQVNNWFINARRRIV QPMIDQSNRAVSQGAAYSPEGQPMGQSFVLDGQQHMGIRPAGLQSMPGDYVSQGG PMGMSMAQPSYTPPQMTPHPTQLRHGPPMHSYLPSPHHPAMMMHGGPPTHPG

 Tel: 1-631-559-9269 1-516-512-3133

 Email: info@creative-biomart.com  Fax: 1-631-938-8127

 45-1 Ramsey Road, Shirley, NY 11967, USA

	MTMSAQSP TMLNSVDPNVGGQVMDIHAQTRTRPLEQKLISEEDLAANDILDYKDDD DKV
Purity	> 80% as determined by SDS-PAGE and Coomassie blue staining
Stability	Stable for 3 months from receipt of products under proper storage and handling conditions.
Storage	Store at -80 centigrade. Avoid repeated freeze-thaw cycles.
Concentration	50 µg/mL as determined by BCA
Storage Buffer	100 mM glycine, 25 mM Tris-HCl, pH 7.3.
GENE INFORMATION	
Gene Name	MEIS2 Meis homeobox 2 [Homo sapiens (human)]
Official Symbol	MEIS2
Synonyms	MEIS2; Meis homeobox 2; Meis (mouse) homolog 2, Meis1, myeloid ecotropic viral integration site 1 homolog 2 (mouse); homeobox protein Meis2; HsT18361; MRG1; Meis homolog 2; Meis1-related gene 1; meis1-related protein 1; TALE homeobox protein Meis2; Meis1, myeloid ecotropic viral integration site 1 homolog 2; MGC2820;
Gene ID	4212
mRNA Refseq	NM_170676
Protein Refseq	NP_733776

 Tel: 1-631-559-9269 1-516-512-3133

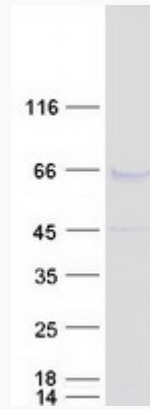
 Email: info@creative-biomart.com  Fax: 1-631-938-8127

 45-1 Ramsey Road, Shirley, NY 11967, USA

MIM 601740

UniProt ID O14770

SDS-PAGE



 Tel: 1-631-559-9269 1-516-512-3133

 Email: info@creative-biomart.com  Fax: 1-631-938-8127

 45-1 Ramsey Road, Shirley, NY 11967, USA