

Recombinant Human MEIS3 Protein, Myc/DDK-tagged, C13 and N15-labeled

Cat. No. MEIS3-1774H Lot. No. (See product label)

SPECIFICATION

Product Overview	MEIS3 MS Standard C13 and N15-labeled recombinant protein (NP_064545) with a C-terminal MYC/DDK tag, was expressed in HEK293 cells.
Species	Human
Source	HEK293
Description	This gene encodes a homeobox protein and probable transcriptional regulator. The orthologous protein in mouse controls expression of 3-phosphoinositide dependent protein kinase 1, which promotes survival of pancreatic beta-cells.
Molecular Mass	46.2 kDa
AA Sequence	MARRYDELPHYPGIVDGPAAALASFPETVPAVPGPYGPHRPPQPLPPGLDSDGLKRE KDEIYGHPLFPLLALVFEKCELATCSPRDGAGAGLGTTPPGDVCSSDSFNEDIAAFA KQVRSERPLFSSNPELDNLMIQAIQVLRFHLLLEKVDLDCDNFCHRYITCLKGKMPI DLVIEDRDGGCREDFEDYPASCPSLPDQNNMWIRHDHEDSGSVHLGTPGPSSGGLA SQSGDNSSDQGDGLDTSVASPSSGGEDEDLDQERRRNKKRGIFPKVATNIMRAWL FQHLSRRSEAPVLPDVCLGLGSPSPGPRWARPWGSDCGRPGRQSDSCWWLQHP YPSEEQKKQLAQDTGLTILQVNNWFINARRRIVQPMIDQSNRTGQGAAFSPEGQPIG GYTETQPHVAVRPPGSGMSLNLEGEWHYLTRTRPLEQKLISEEDLAANDILDYKDD DDKV
Purity	> 80% as determined by SDS-PAGE and Coomassie blue staining

 Tel: 1-631-559-9269 1-516-512-3133

 Email: info@creative-biomart.com  Fax: 1-631-938-8127

 45-1 Ramsey Road, Shirley, NY 11967, USA

Stability	Stable for 3 months from receipt of products under proper storage and handling conditions.
Storage	Store at -80 centigrade. Avoid repeated freeze-thaw cycles.
Concentration	50 µg/mL as determined by BCA
Storage Buffer	100 mM glycine, 25 mM Tris-HCl, pH 7.3.
GENE INFORMATION	
Gene Name	MEIS3 Meis homeobox 3 [Homo sapiens (human)]
Official Symbol	MEIS3
Synonyms	MEIS3; Meis homeobox 3; Meis1, myeloid ecotropic viral integration site 1 homolog 3 (mouse); homeobox protein Meis3; DKFZp547H236; MRG2; meis1-related protein 2; Meis1, myeloid ecotropic viral integration site 1 homolog 3;
Gene ID	56917
mRNA Refseq	NM_020160
Protein Refseq	NP_064545
UniProt ID	Q99687

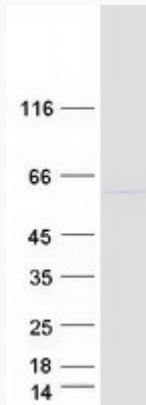
 Tel: 1-631-559-9269 1-516-512-3133

 Email: info@creative-biomart.com  Fax: 1-631-938-8127

 45-1 Ramsey Road, Shirley, NY 11967, USA



SDS-PAGE



Tel: 1-631-559-9269 1-516-512-3133

Email: info@creative-biomart.com Fax: 1-631-938-8127

45-1 Ramsey Road, Shirley, NY 11967, USA