

Recombinant Human MEMO1 Protein, Myc/DDK-tagged, C13 and N15-labeled

Cat. No. MEMO1-1085H **Lot. No.** (See product label)

SPECIFICATION

Product Overview	MEMO1 MS Standard C13 and N15-labeled recombinant protein (NP_057039) with a C-terminal MYC/DDK tag, was expressed in HEK293 cells.
Species	Human
Source	HEK293
Description	MEMO1 (Mediator Of Cell Motility 1) is a Protein Coding gene. Diseases associated with MEMO1 include Periampullary Adenoma. Among its related pathways are Signaling by GPCR and Signaling by ERBB2.
Molecular Mass	33.7 kDa
AA Sequence	MSNRVVCREASHAGSWYTASGPQLNAQLEGWLSQVQSTKRPARAIIAPHAGYTYC GSCAAHAYKQVDPSITRRIFILGPSHHVPLSRCALSSVDIYRTPLYDLRIDQKIYGELW KTGMFERMSLQTDDEDEHSIEMHLPYTAKAMESHKDEFTIIPVLVGALSESKEQEF GK LFSKYLADPSNLFVSSDFCHWGQRF RYSYYDESQGEIYRSIEHLDKMGMSIIEQLD PVFSNYLKKYHNTICGRHPIGVLLNAITELQKNGMNMSFSFLNYAQSSQCRNWQD SSVSYAAGALTVHTRTRPLEQKLISEEDLAANDILDYKDDDDKV
Purity	> 80% as determined by SDS-PAGE and Coomassie blue staining
Stability	Stable for 3 months from receipt of products under proper storage and handling conditions.

 Tel: 1-631-559-9269 1-516-512-3133

 Email: info@creative-biomart.com  Fax: 1-631-938-8127

 45-1 Ramsey Road, Shirley, NY 11967, USA

Storage	Store at -80 centigrade. Avoid repeated freeze-thaw cycles.
Concentration	50 µg/mL as determined by BCA
Storage Buffer	100 mM glycine, 25 mM Tris-HCl, pH 7.3.

GENE INFORMATION

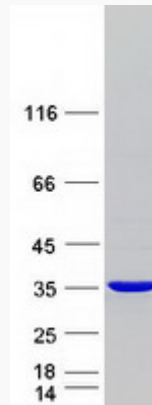
Gene Name	MEMO1 mediator of cell motility 1 [Homo sapiens (human)]
Official Symbol	MEMO1
Synonyms	MEMO1; mediator of cell motility 1; MEMO; C2orf4; CGI-27; NS5ATP7; protein MEMO1; C21orf19-like protein; HCV NS5A-transactivated protein 7; hepatitis C virus NS5A-transactivated protein 7; mediator of ErbB2-driven cell motility 1
Gene ID	51072
mRNA Refseq	NM_015955
Protein Refseq	NP_057039
MIM	611786
UniProt ID	Q9Y316

 Tel: 1-631-559-9269 1-516-512-3133

 Email: info@creative-biomart.com  Fax: 1-631-938-8127

 45-1 Ramsey Road, Shirley, NY 11967, USA

SDS-PAGE



 Tel: 1-631-559-9269 1-516-512-3133

 Email: info@creative-biomart.com  Fax: 1-631-938-8127

 45-1 Ramsey Road, Shirley, NY 11967, USA