

# Recombinant Full Length Human menin 1 Protein, His&Avi tagged

**Cat. No.** MEN1-02H    **Lot. No.** (See product label)

## SPECIFICATION

<b>Product Overview</b>	Recombinant full length human menin 1 Protein with His&Avi tag was expressed in HEK293.
<b>Species</b>	Human
<b>Source</b>	HEK293
<b>ProteinLength</b>	1-610aa
<b>Description</b>	This gene encodes menin, a tumor suppressor associated with a syndrome known as multiple endocrine neoplasia type 1. Menin is a scaffold protein that functions in histone modification and epigenetic gene regulation. It is thought to regulate several pathways and processes by altering chromatin structure through the modification of histones
<b>Tag</b>	His&Avi
<b>Molecular Mass</b>	71 kDa
<b>AA Sequence</b>	MGLKAAQKTLFPLRSIDDVRLFAAELGREEPDLVLLSLVLGFVEHFLAVNRVIPTNV PELTFQPSPAPDPPGGLTYFPVADLSIIAALYARFTAQIRGAVDLSLYPREGGVSSRE LVKKVSDVIWNLSRSYFKDRAHIQSLFSFITGWSPVGTKLDSSGVAFVAVVGACQAL GLRDVHLALSEDHAWVVFGPNGEQTAEVTWHGKGNEDRRGQTVNAGVAERSWLY LKGSYMRCDRKMVAFMVCAINPSIDLHTDSLELLQLQKLLWLLYDLGHLERYPMA

 Tel: 1-631-559-9269    1-516-512-3133

 Email: [info@creative-biomart.com](mailto:info@creative-biomart.com)     Fax: 1-631-938-8127

 45-1 Ramsey Road, Shirley, NY 11967, USA



LGNLADLEELEPTPGRPDPLTLYHKGIASAKTYRDEHIYPMYLAGYHCRNRNVRE  
 ALQAWADTATVIQDYNCREDEEIIYKEFFEIVANDVIPNLLKEAASLLEAGEEERPGEQ  
 SQGTQSQGSALQDPECFAHLLRFYDGICKWEEGSPTPVLHVGWATFLVQSLGRFE  
 GQVRQKVRIVSREAEAAEAEEPWGEEAREGRRRGPRRESKPEEPPPPKPPALDKG  
 LGTGQGAVSGPPRKPPTVAGTARGPEGGSTAQVPAPTASPPPEGPVLTQSEKM  
 KGMKELLVATKINSSAIKLQLTAQSQVQMKKQKVSTPSDYTLSFLKRQRKGLHHHHH  
 HHHHHGLNDIFEAQKIEWHE

<b>Endotoxin</b>	< 0.1 EU/μg by LAL
<b>Purity</b>	> 85% by SDS-PAGE
<b>Storage</b>	Store it under sterile conditions at -20 to -80 centigrade. It is recommended that the protein be aliquoted for optimal storage. Avoid repeated freeze-thaw cycles.
<b>Storage Buffer</b>	Sterile 25mM Hepes, 150mM NaCl, pH 8.0, 2mM DTT
<b>Concentration</b>	0.024 mg/mL by Bradford

## GENE INFORMATION

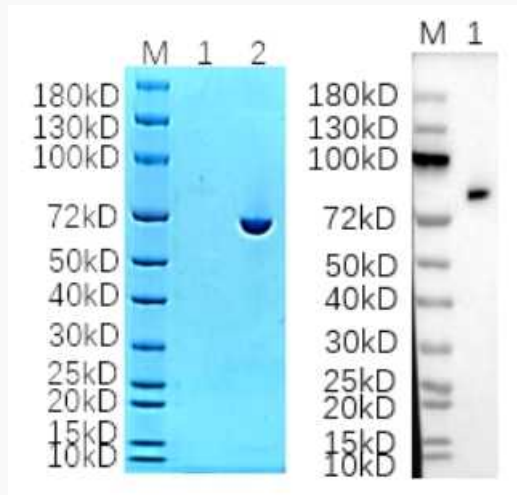
<b>Gene Name</b>	MEN1 menin 1 [ Homo sapiens (human) ]
<b>Official Symbol</b>	MEN1
<b>Synonyms</b>	MEN1; multiple endocrine neoplasia I; menin; endocrine adenomatosis, multiple; MEAI; SCG2; MENIN;
<b>Gene ID</b>	4221
<b>mRNA Refseq</b>	NM_000244

**Protein Refseq** NP\_000235

**MIM** 613733

**UniProt ID** O00255

**Reducing 12% SDS-PAGE (CBB stained) and WB (Anti-His Mouse Monoclonal antibody) analysis profiles of purified MEN1.**



1. MEN1  
2. BSA

Tel: 1-631-559-9269 1-516-512-3133

Email: [info@creative-biomart.com](mailto:info@creative-biomart.com) Fax: 1-631-938-8127

45-1 Ramsey Road, Shirley, NY 11967, USA