

# Recombinant Full Length Human multiple endocrine neoplasia I Protein, His&Avi-tagged

Cat. No. MEN1-03H Lot. No. (See product label)

## SPECIFICATION

<b>Product Overview</b>	Recombinant Full Length Human MEN1 Protein with His&Avi-tag was expressed in HEK293.
<b>Species</b>	Human
<b>Source</b>	HEK293
<b>ProteinLength</b>	Full length
<b>Description</b>	This gene encodes menin, a tumor suppressor associated with a syndrome known as multiple endocrine neoplasia type 1. Menin is a scaffold protein that functions in histone modification and epigenetic gene regulation. It is thought to regulate several pathways and processes by altering chromatin structure through the modification of histones.
<b>Tag</b>	His&Avi
<b>Molecular Mass</b>	70 kDa
<b>AA Sequence</b>	MGLKAAQKTLFPLRSIDDVVRLFAAELGREEPDLVLLSLVLGFVEHFLAVNRVIPTNV PELTFQPSPAPDPPGGLTYFPVADLSIIAALYARFTAQIRGAVDLSLYPREGGVSSRE LVKKVSDVIWNLSRSYFKDRAHIQSLFSFITGKLDSSGVAFVAVVGACQALGLRDV HLALSEDHAWVVFGPNGEQTAEVTWHGKGNEDRRGQTVNAGVAERSWLYLKGSY MRCDRKMEVAFMVCAINPSIDLHTDSLELLQLQQKLLWLLYDLGHLERYPMALGNLA

 Tel: 1-631-559-9269 1-516-512-3133

 Email: [info@creative-biomart.com](mailto:info@creative-biomart.com)  Fax: 1-631-938-8127

 45-1 Ramsey Road, Shirley, NY 11967, USA

DLEELEPTPGRPDPLTLYHKGIASAKTYRDEHIYPYMYLAGYHCRNRNVREALQA  
 WADTATVIQDYNCREDEEIIYKEFFEVEDVANDVIPNLLKEAASLLEAGEERPGEQSQGT  
 QSQGSALQDPECFAHLLRFYDGICKWEEGSPTPVLHVGVATFLVQSLGRFEGQVR  
 QKVRIVSREAEAAEAEPPWGEEAREGRRRGPRRESKPEEPPPPKPPALDKGLGTG  
 QGAVSGPPRKPPGTVAGTARGPEGGSTAQVPAPTASPPPEGPVLTFFQSEKMKGMK  
 ELLVATKINSSAIKLQLTAQSQVQMKKQKVSTPSDYTLSFLKRQRKGLHHHHHHHHHG  
 LNDIFEAQKIEWHE

<b>Endotoxin</b>	< 0.1 EU/μg by LAL.
<b>Purity</b>	> 85 % by SDS-PAGE
<b>Storage</b>	Store it under sterile conditions at -20 to -80 centigrade. It is recommended that the protein be aliquoted for optimal storage. Avoid repeated freeze-thaw cycles.
<b>Concentration</b>	0.082 mg/mL by A280
<b>Storage Buffer</b>	Sterile 25mM Hepes, 150mM NaCl, 2mM DTT, pH 8.0, 10 % Glycerol, 0.5 % SKL

## GENE INFORMATION

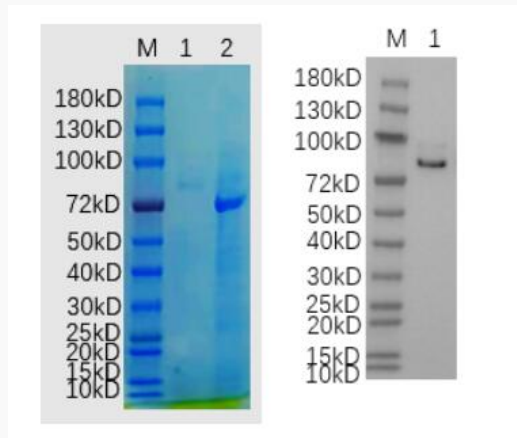
<b>Gene Name</b>	MEN1 multiple endocrine neoplasia I [Homo sapiens (human)]
<b>Official Symbol</b>	MEN1
<b>Synonyms</b>	MEN1; multiple endocrine neoplasia I; menin; endocrine adenomatosis, multiple; MEAI; SCG2; MENIN
<b>Gene ID</b>	4221
<b>mRNA Refseq</b>	NM_000244

**Protein Refseq** NP\_000235

**MIM** 613733

**UniProt ID** O00255

**Reducing 12 % SDS-PAGE (CBB stained) and WB (Anti-His Mouse Monoclonal antibody) analysis profiles of purified MEN1.**



1. MEN1
2. BSA

 Tel: 1-631-559-9269 1-516-512-3133

 Email: [info@creative-biomart.com](mailto:info@creative-biomart.com)  Fax: 1-631-938-8127

 45-1 Ramsey Road, Shirley, NY 11967, USA