

Recombinant Human MEN1 Protein (M1-L615), His tagged

Cat. No. MEN1-0458H Lot. No. (See product label)

SPECIFICATION

Product Overview	Recombinant Human MEN1 Protein (M1-L615) with His tag was expressed in E. coli.
Species	Human
Source	E.coli
ProteinLength	M1-L615
Description	This gene encodes menin, a tumor suppressor associated with a syndrome known as multiple endocrine neoplasia type 1. Menin is a scaffold protein that functions in histone modification and epigenetic gene regulation. It is thought to regulate several pathways and processes by altering chromatin structure through the modification of histones.
Molecular Mass	The protein has a calculated MW of 69 kDa.
AA Sequence	MHHHHHHHENLYFQGMGLKAAQKTLFPLRSIDDVVRLFAAELGREEPDLVLLSLVLGF VEHFLAVNRVIPTNVPELTFQPSPAPDPPGGLTYFPVADLSIIAALYARFTAQIRGAVD LSLYPREGGVSSRELVKKVSDVIWNSLSRSYFKDRAHIQSLFSFITGKLDSSGVAFA VVGACQALGLRDVHLALSEDHAWVVFPGNGEQTA EVTWHGKGNEDRRGQTVNAG VAERSWLKGSYMRCDRMEVAFMVCAINPSIDLHTDSLELLQLQKLLWLLYDLG HLERYPMALGNLADLEELEPTPGRPDPLTYHKGIAAKTYRDEHIYPMYLAGYH CRNRNVREALQAWADTATVIQDYNCREDEEIIYKEFFEVANDVIPNLLKEAASLLEA GEERPGEQSQGTQSQGSALQDPECFAHLLRFYDGICKWEEGSPTPVLHVGWATFL VQSLGRFEGQVRQKVRIVSREAEAAEAEEPWGEEAREGRRRGPRRESKPEEPPPP

 Tel: 1-631-559-9269 1-516-512-3133

 Email: info@creative-biomart.com  Fax: 1-631-938-8127

 45-1 Ramsey Road, Shirley, NY 11967, USA

KKPALDKGLGTGQGAVSGPPRKPPGTVAGTARGPEGGSTAQVPAPTASPPPEGPV
LTFQSEKMKGMKELLVATKINSSAIKLQLTAQSQVQMKKQKVSTPSDYTL SFLKRQR
KGL

Endotoxin < 0.1 EU/μg by LAL

Purity > 90% by SDS-PAGE

Storage Store it under sterile conditions at -20 to -80 centigrade. It is recommended that the protein be aliquoted for optimal storage. Avoid repeated freeze-thaw cycles.

Concentration 0.32 mg/mL by BCA

Storage Buffer Sterile 50 mM Tris, 200 mM NaCl, pH7.5, 20% Glycerol

GENE INFORMATION

Gene Name [MEN1 multiple endocrine neoplasia I \[Homo sapiens \]](#)

Official Symbol [MEN1](#)

Synonyms MEN1; multiple endocrine neoplasia I; menin; endocrine adenomatosis, multiple; MEAI; SCG2; MENIN;

Gene ID [4221](#)

mRNA Refseq [NM_000244](#)

Protein Refseq [NP_000235](#)

MIM [613733](#)

 Tel: 1-631-559-9269 1-516-512-3133

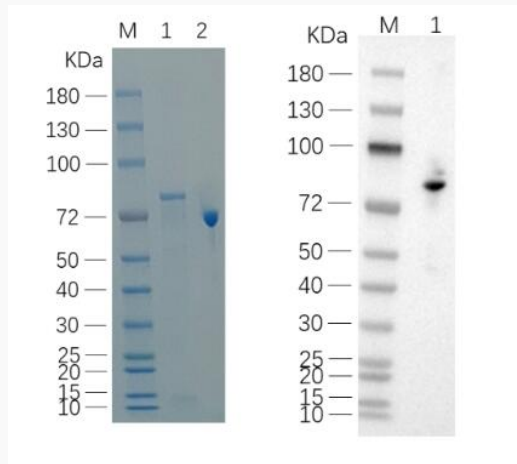
 Email: info@creative-biomart.com  Fax: 1-631-938-8127

 45-1 Ramsey Road, Shirley, NY 11967, USA

UniProt ID

O00255

Reducing 12% SDS-PAGE (CBB stained) and WB (Anti-His Mouse Monoclonal antibody) analysis profile of purified MEN1.



1. MEN1-0458H
2. BSA

 Tel: 1-631-559-9269 1-516-512-3133

 Email: info@creative-biomart.com  Fax: 1-631-938-8127

 45-1 Ramsey Road, Shirley, NY 11967, USA