

# Recombinant Human menin 1 Protein, His tagged

Cat. No. MEN1-04H Lot. No. (See product label)

## SPECIFICATION

<b>Product Overview</b>	Recombinant Human MEN1 Protein (1-615aa) with His tag was expressed in HEK293.
<b>Species</b>	Human
<b>Source</b>	HEK293
<b>ProteinLength</b>	1-615aa
<b>Description</b>	This gene encodes menin, a tumor suppressor associated with a syndrome known as multiple endocrine neoplasia type 1. Menin is a scaffold protein that functions in histone modification and epigenetic gene regulation. It is thought to regulate several pathways and processes by altering chromatin structure through the modification of histones.
<b>Tag</b>	C-His
<b>Molecular Mass</b>	69 kDa
<b>AA Sequence</b>	MGLKAAQKTLFPLRSIDDVRLFAAELGREEPDLVLLSLVLGFVEHFLAVNRVIPTNV PELTFQPSPAPDPPGGLTYFPVADLSIIAALYARFTAQIRGAVDLSLYPREGGVSSRE LVKKVSDVIWNSLSRSYFKDRAHIQSLFSFITGWSPVGTKLDSSGVAFVAVVGACQAL GLRDVHLALSEDHAWVVFGPNGEQTA EVTWHGKGNEDRRGQTVNAGVAERSWLY LKGSYMRCDRKMEVAFMVCAINPSIDLHTDSLELLQLQKLLWLLYDLGHLERYPMA LGNLADLEELEPTPGRPDPLTYHKGIASAKTYRDEHIYPYMYLAGYHCRNRNVRE

 Tel: 1-631-559-9269 1-516-512-3133

 Email: [info@creative-biomart.com](mailto:info@creative-biomart.com)  Fax: 1-631-938-8127

 45-1 Ramsey Road, Shirley, NY 11967, USA

ALQAWADTATVIQDYNCREDEEIIYKEFFEVANDVIPNLLKEAASLLEAGEERPGEQ  
 SQGTQSQGSALQDPECFAHLLRFYDGICKWEEGSPTPVLHVGWATFLVQSLGRFE  
 GQVRQKVRIVSREAEAAEAEPEPWGEEAREGRRRGPRRESKPEEPPPPKPPALDKG  
 LGTGQGAVSGPPRKPPGTVAGTARGPEGGSTAQVPAPTASPPPEGPVLTFFQSEKM  
 KGMKELLVATKINSSAIKLQLTAQSQVQMKKQKVSTPSDYTLSFLKRQRKGLHHHHH  
 HHHHH

**Endotoxin** < 0.1 EU/μg by LAL

**Purity** > 85% by SDS-PAGE

**Storage** Store it under sterile conditions at -20 to -80 centigrade. It is recommended that the protein be aliquoted for optimal storage. Avoid repeated freeze-thaw cycles.

**Storage Buffer** Sterile 25mM Hepes, 150mM NaCl, pH8.0, 2mM DTT

**Concentration** 0.025 mg/mL by Bradford

## GENE INFORMATION

**Gene Name** [MEN1](#) [menin 1 \[ Homo sapiens \(human\) \]](#)

**Official Symbol** [MEN1](#)

**Synonyms** MEN1; multiple endocrine neoplasia I; menin; endocrine adenomatosis, multiple; MEAI; SCG2; MENIN

**Gene ID** [4221](#)

**mRNA Refseq** [NM\\_000244](#)

 Tel: 1-631-559-9269 1-516-512-3133

 Email: [info@creative-biomart.com](mailto:info@creative-biomart.com)  Fax: 1-631-938-8127

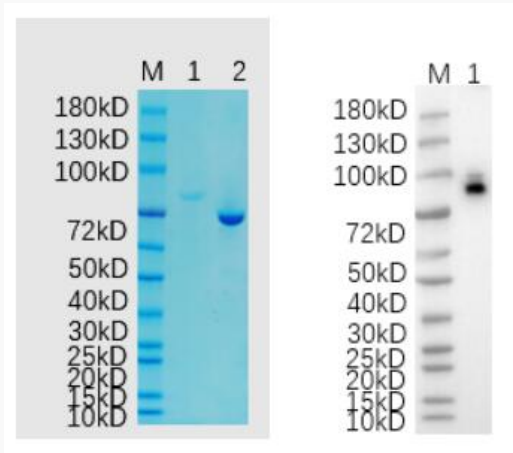
 45-1 Ramsey Road, Shirley, NY 11967, USA

**Protein Refseq** NP\_000235

**MIM** 613733

**UniProt ID** O00255

**Reducing 12% SDS-PAGE (CBB stained) and WB (Anti-His Mouse Monoclonal antibody) analysis profiles of purified MEN1.**



1. MEN1
2. BSA

 Tel: 1-631-559-9269 1-516-512-3133

 Email: [info@creative-biomart.com](mailto:info@creative-biomart.com)  Fax: 1-631-938-8127

 45-1 Ramsey Road, Shirley, NY 11967, USA