

# Recombinant Full Length Human MEN1 Protein, C-Flag-tagged

Cat. No. MEN1-229HFL Lot. No. (See product label)

## SPECIFICATION

<b>Product Overview</b>	Recombinant Full Length Human MEN1 Protein, fused to Flag-tag at C-terminus, was expressed in Mammalian cells.
<b>Species</b>	Human
<b>Source</b>	Mammalian Cells
<b>Description</b>	This gene encodes menin, a tumor suppressor associated with a syndrome known as multiple endocrine neoplasia type 1. Menin is a scaffold protein that functions in histone modification and epigenetic gene regulation. It is thought to regulate several pathways and processes by altering chromatin structure through the modification of histones.
<b>Form</b>	25 mM Tris HCl, pH 7.3, 100 mM glycine, 10% glycerol.
<b>Molecular Mass</b>	67.3 kDa
<b>AA Sequence</b>	MGLKAAQKTLFPLRSIDDVRLFAAELGREEPDLVLLSLVLGFVEHFLAVNRVIPTNV PELTFQPSPAPD PPGGLTYFPVADLSIIAALYARFTAQIRGAVDLSLYPREGGVSSRE LVKKVSDVIWNLSRSYFKDRAHI QSLFSFITGTKLDSSGVAFVAVVGACQALGLRDV HLALSEDHAWVVFGPNGEQTA EVTWHGKGNEDRRGQT VNAGVAERSWLYLKGS YMRCDRKMEVAFMVCAINPSIDLHTDSLELLQLQKLLWLLYDLGHLERYPMAL GN LADLEELEPTPGRPDPPLTYHKGIASAKTYRDEHIYPYMYLAGYHCRNRNVREALQ AWADTATVIQD YNYCREDEEYKEFFEVEANDVIPNLLKEAASLLEAGEERPGEQSQG TQSQGSALQDPECFAHLLRFYDGI CKWEEGSPTPVLHVGVWATFLVQSLGRFEGQV

 Tel: 1-631-559-9269 1-516-512-3133

 Email: [info@creative-biomart.com](mailto:info@creative-biomart.com)  Fax: 1-631-938-8127

 45-1 Ramsey Road, Shirley, NY 11967, USA

RQKVRIVSREAEAAEAEEPWGEEAREGRRRGPRRESKPE EPPPPKKPALDKGLGT  
 GQGAVSGPPRKPPGTVAGTARGPEGGSTAQVPAPAASPPPEGPVLTFFQSEKMKMG  
 MKELLVATKINSSAIKLQLTAQSQVQMKKQKVSTPSDYTLSFLKRQRKGLTRTRPLE  
 QKLISEEDLAANDILDYKDDDDKV

**Purity** > 80% as determined by SDS-PAGE and Coomassie blue staining.

**Stability** Stable for 12 months from the date of receipt of the product under proper storage and handling conditions. Avoid repeated freeze-thaw cycles.

**Storage** Store at -80 centigrade.

**Concentration** >50 ug/mL as determined by microplate BCA method.

**Preparation** Recombinant protein was captured through anti-DDK affinity column followed by conventional chromatography steps.

**Protein Families** Druggable Genome, Transcription Factors

**Full Length** Full L.

## GENE INFORMATION

**Gene Name** [MEN1 menin 1 \[ Homo sapiens \(human\) \]](#)

**Official Symbol** [MEN1](#)

**Synonyms** MEAI; SCG2

**Gene ID** [4221](#)

 Tel: 1-631-559-9269 1-516-512-3133

 Email: [info@creative-biomart.com](mailto:info@creative-biomart.com)  Fax: 1-631-938-8127

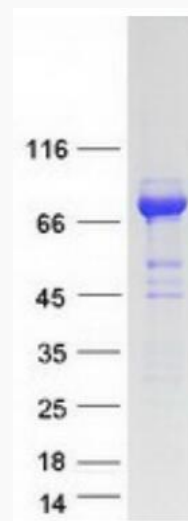
 45-1 Ramsey Road, Shirley, NY 11967, USA

mRNA Refseq [NM\\_130799.3](#)

Protein Refseq [NP\\_570711.2](#)

MIM [613733](#)

UniProt ID [O00255](#)



Coomassie blue staining of purified MEN1 protein.

 Tel: 1-631-559-9269 1-516-512-3133

 Email: [info@creative-biomart.com](mailto:info@creative-biomart.com)  Fax: 1-631-938-8127

 45-1 Ramsey Road, Shirley, NY 11967, USA