

Recombinant Human MEN1 Protein, Myc/DDK-tagged, C13 and N15-labeled

Cat. No. MEN1-3298H Lot. No. (See product label)

SPECIFICATION

Product Overview	MEN1 MS Standard C13 and N15-labeled recombinant protein (NP_570711) with a C-terminal MYC/DDK tag, was expressed in HEK293 cells.
Species	Human
Source	HEK293
Description	This gene encodes menin, a tumor suppressor associated with a syndrome known as multiple endocrine neoplasia type 1. Menin is a scaffold protein that functions in histone modification and epigenetic gene regulation. It is thought to regulate several pathways and processes by altering chromatin structure through the modification of histones.
Molecular Mass	67.3 kDa
AA Sequence	MGLKAAQKTLFPLRSIDDVRLFAAELGREEPDLVLLSLVLGFVEHFLAVNRVIPTNV PELTFQPSPAPDPPGGLTYFPVADLSIIAALYARFTAQIRGAVDLSLYPREGGVSSRE LVKKVSDVIWNSLSRSYFKDRAHIQSLFSFITGTKLDSSGVAFVAVGACQALGLRDV HLALSEDHAWVVFGPNGEQTAEVTWHGKGNEDRRGQTVNAGVAERSWLYLKGSY MRCDRKMVAFMVCAINPSIDLHTDSLELLQLQKLLWLLYDLGHLERYPMALGNLA DLEELEPTPGRPDPLTLYHKGIASAKTYRDEHIYPMYLAGYHCRNRNVREALQA WADTATVIQDYNCREDEEIIYKEFFEVEVANDVIPNLLKEAASLLEAGEERPGEQSQGT QSQGSALQDPECFAHLLRFYDGICKWEEGSPTPVLHVGWATFLVQSLGRFEGQVR

 Tel: 1-631-559-9269 1-516-512-3133

 Email: info@creative-biomart.com  Fax: 1-631-938-8127

 45-1 Ramsey Road, Shirley, NY 11967, USA

QKVRIVSREAEAAEAEEPWGEEAREGRRRGPRRESKPEEPPPPKKPALDKGLGTG
 QGAVSGPPRKPPGTVAGTARGPEGGSTAQVPAPAASPPPEGPVLTFFQSEKMKGM
 KELLVATKINSSAIKLQLTAQSQVQMKKQKVSTPSDYTLSFLKRQRKGLTRTRPLEQK
 LISEEDLAANDILDYKDDDDKV

Purity > 80% as determined by SDS-PAGE and Coomassie blue staining

Stability Stable for 3 months from receipt of products under proper storage and handling conditions.

Storage Store at -80 centigrade. Avoid repeated freeze-thaw cycles.

Concentration 50 µg/mL as determined by BCA

Storage Buffer 100 mM glycine, 25 mM Tris-HCl, pH 7.3.

GENE INFORMATION

Gene Name [MEN1 multiple endocrine neoplasia I \[Homo sapiens \(human\) \]](#)

Official Symbol [MEN1](#)

Synonyms MEN1; multiple endocrine neoplasia I; meningioma; endocrine adenomatosis, multiple; MEAI; SCG2; MENIN;

Gene ID [4221](#)

mRNA Refseq [NM_130799](#)

Protein Refseq [NP_570711](#)

 Tel: 1-631-559-9269 1-516-512-3133

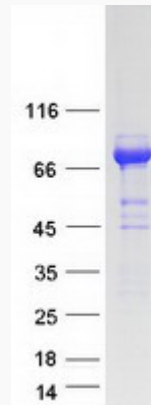
 Email: info@creative-biomart.com  Fax: 1-631-938-8127

 45-1 Ramsey Road, Shirley, NY 11967, USA

MIM 613733

UniProt ID O00255

SDS-PAGE



 Tel: 1-631-559-9269 1-516-512-3133

 Email: info@creative-biomart.com  Fax: 1-631-938-8127

 45-1 Ramsey Road, Shirley, NY 11967, USA