

Recombinant Human MEN1 Protein, GST-tagged

Cat. No. MEN1-4445H Lot. No. (See product label)

SPECIFICATION

Product Overview Human MEN1 full-length ORF (AAH02544.1, 1 a.a. - 575 a.a.) recombinant protein with GST-tag at N-terminal.

Species Human

Source Wheat Germ

Description This gene encodes menin, a putative tumor suppressor associated with a syndrome known as multiple endocrine neoplasia type 1. In vitro studies have shown menin is localized to the nucleus, possesses two functional nuclear localization signals, and inhibits transcriptional activation by JunD, however, the function of this protein is not known. Two messages have been detected on northern blots but the larger message has not been characterized. Alternative splicing results in multiple transcript variants. [provided by RefSeq]

Molecular Mass 90.1 kDa

AA Sequence

```
MGLKAAQKTLFPLRSIDDVVRLFAAELGREEPDLVLLSLVLGFVEHFLAVNRVIPTNV
PELTFQPSPAPDPPGGLTYFPVADLSIIAALYARFTAQIRGAVDLSLYPREGGVSSRE
LVKKVSDVIWNSLSRSYFKDRAHIQSLFSFITGTKLDSSGVAFVAVGACQALGLRDV
HLALSEDHAWSWLYLKGSYMRCRDKMEVAFMVCAINPSIDLHTDSLELLQLQKLL
WLLYDLGHLERYPMALGNLADLEELEPTPGRPDPLTYHKGIASAKTYRDEHIYPY
MYLAGYHCRNRNVREALQAWADTATVIQDYNCREDEEIIYKEFFEVEVANDVIPNLLKE
AASLLEAGEERPGEQSQGTQSQGSALQDPECFAHLLRFYDGICKWEEGSPTPVLHV
```

 Tel: 1-631-559-9269 1-516-512-3133

 Email: info@creative-biomart.com  Fax: 1-631-938-8127

 45-1 Ramsey Road, Shirley, NY 11967, USA

GWATFLVQSLGRFEGQVRQKVRIVSREAEAAEAEPPWGEEAREGRRRGPRRESKP
 EEPKPKKALDKGLGTGQGAVSGPPRKPPTVAGTARGPEGGSTAQVPAPAASP
 PPEGPVLTFQSEKMKGMKELLVATKINSSAIKLQLTAQSQVQMKKQKVSTPSDYTLS
 FLKRQRKGL

Applications	Enzyme-linked Immunoabsorbent Assay Western Blot (Recombinant protein) Antibody Production Protein Array
Notes	Best use within three months from the date of receipt of this protein.
Storage	Store at -80 centigrade. Aliquot to avoid repeated freezing and thawing.
Storage Buffer	50 mM Tris-HCl, 10 mM reduced Glutathione, pH=8.0 in the elution buffer.

GENE INFORMATION

Gene Name	MEN1 multiple endocrine neoplasia I [Homo sapiens]
Official Symbol	MEN1
Synonyms	MEN1; multiple endocrine neoplasia I;menin; endocrine adenomatosis, multiple; MEAI; SCG2; MENIN;
Gene ID	4221
mRNA Refseq	NM_000244
Protein Refseq	NP_000235

 Tel: 1-631-559-9269 1-516-512-3133

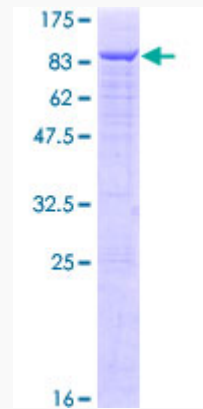
 Email: info@creative-biomart.com  Fax: 1-631-938-8127

 45-1 Ramsey Road, Shirley, NY 11967, USA

MIM 613733

UniProt ID O00255

**Quality Control
Testing**



12.5% SDS-PAGE Stained with Coomassie Blue

 Tel: 1-631-559-9269 1-516-512-3133

 Email: info@creative-biomart.com  Fax: 1-631-938-8127

 45-1 Ramsey Road, Shirley, NY 11967, USA