

Recombinant Full Length Mouse MEN1 Protein, His&Avi tagged, Biotinylated

Cat. No. MEN1-5475MB Lot. No. (See product label)

SPECIFICATION

Product Overview

Biotinylated recombinant Full Length Mouse MEN1 Protein with His&Avi tag was expressed in HEK293.

Species

Mouse

Source

HEK293

ProteinLength

1-611 aa

Description

Enables DNA-binding transcription activator activity; chromatin binding activity; and transcription cis-regulatory region binding activity. Involved in transcription initiation-coupled chromatin remodeling. Acts upstream of or within several processes, including negative regulation of cell population proliferation; regulation of macromolecule metabolic process; and regulation of osteoblast differentiation. Located in chromosome, telomeric region; cytoplasm; and nucleus. Is expressed in several structures, including 1st branchial arch; alimentary system; central nervous system; gonad; and sensory organ. Used to study growth hormone secreting pituitary adenoma; hyperparathyroidism; multiple endocrine neoplasia type 1; and prolactinoma. Human ortholog(s) of this gene implicated in endocrine gland cancer (multiple); hyperparathyroidism; and multiple endocrine neoplasia type 1. Orthologous to human MEN1 (menin 1).

Molecular Mass

71 kDa

 Tel: 1-631-559-9269 1-516-512-3133

 Email: info@creative-biomart.com  Fax: 1-631-938-8127

 45-1 Ramsey Road, Shirley, NY 11967, USA

AASequence

MGLKAAQKTLFPLRSIDDVVRLFAAELGREEPDLVLLSLVLGFVEHFLAVNRVIPTNV
 PELTFQPSPAPDPPGGLTYFPVADLSIIAALYARFTAQIRGAVDLSLYPREGGVSSRE
 LVKKVSDVIWNLSRSYFKDRAHIQSLFSFITGTKLDSSGVAFVAVGACQALGLRDV
 HLALSEDHAWVVFGPNGEQTAEVTWHGKGNEDRRGQTVNAGVAERSWLYLKGSY
 MRCDRKMEVAFMVCAINPSIDLHTDSLELLQLQKLLWLLYDLGHLERYPMALGNLA
 DLEELEPTPGRPDPLTLYHKGIASAKTYQDEHIYPYMYLAGYHCRNRNVREALQA
 WADTATVIQDYNCREDEEYKEFFEYVANDVIPNLLKEAASLLETGEERTGEQAQGT
 QGQGSALQDPECFAHLLRFYDGICKWEEGSPTPVLHVGWATFLVQSLGRFEGQVR
 QKVHIVSREAEAAEAEPEPWGDEAREGRRRGPRRESKPEEPPPPKPPALDKGPGSG
 QSAGSGPPRKTSGTVPGTTRGGQEVGNAAQAPAPAASPPPEGPVLTFFQSEKMKG
 MKELLVATKINSSAIKLQLTAQSQVQMKKQKVSTPSDYTLSFLKRQRKGLHHHHHHH
 HHHGLNDIFEAQKIEWHE

Endotoxin

<1EU/μg by LAL

Purity

> 85% by SDS-PAGE

Labeling efficiency

0.93 by HABA

Storage

Store it under sterile conditions at -20 to -80 centigrade. It is recommended that the protein be aliquoted for optimal storage. Avoid repeated freeze-thaw cycles.

Storage Buffer

Sterile PBS, pH7.4

Concentration

0.24 mg/mL by BCA

Conjugation

Biotin


GENE INFORMATION

Gene Name

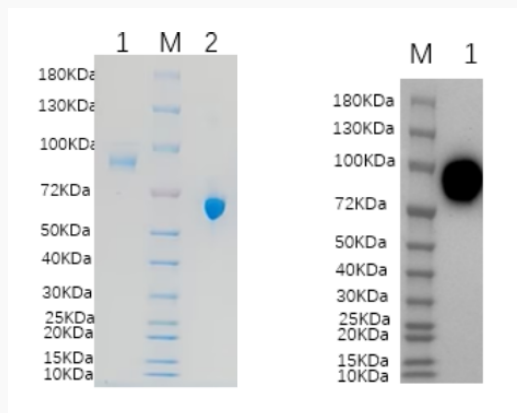
Men1 multiple endocrine neoplasia 1 [*Mus musculus* (house mouse)]

 Tel: 1-631-559-9269 1-516-512-3133

 Email: info@creative-biomart.com  Fax: 1-631-938-8127

 45-1 Ramsey Road, Shirley, NY 11967, USA

Official Symbol	Men1
Synonyms	Men1; multiple endocrine neoplasia 1; menin
Gene ID	17283
mRNA Refseq	NM_008583
Protein Refseq	NP_032609
UniProt ID	F8WHD9

SDS-PAGE and WB


Reducing 4%-20% SDS-PAGE (CBB stained) and WB (Anti-His Mouse Monoclonal antibody) analysis profiles of purified MEN1. 1. MEN1: 1 μ g 2. BSA: 1 μ g

 Tel: 1-631-559-9269 1-516-512-3133

 Email: info@creative-biomart.com  Fax: 1-631-938-8127

 45-1 Ramsey Road, Shirley, NY 11967, USA