

## Recombinant Human MEP1A protein, His-tagged

Cat. No. MEP1A-12H Lot. No. (See product label)

### SPECIFICATION

<b>Product Overview</b>	Recombinant human MEP1A, fused to His-tag at C-terminus, was expressed in insect cell and purified by using conventional chromatography techniques.
<b>Species</b>	Human
<b>Source</b>	Insect Cells
<b>Description</b>	MEP1A, also known as meprin A subunit alpha, is a single-pass type I membrane protein which belongs to the peptidase M12A family. It abundantly expressed in kidney and intestinal epithelial cells, are secreted into the urinary tract and intestinal lumen, and are found in leukocytes and cancer cells under certain conditions. It is capable of proteolytically degrading extracellular matrix proteins, proteolytically processing bioactive proteins, and play a role in inflammatory processes.
<b>Form</b>	Liquid. In Phosphate Buffered Saline (pH 7.4) containing 10% glycerol.
<b>Molecular Mass</b>	67.4kDa (589aa) 70-100kDa (SDS-PAGE under reducing conditions)
<b>AA Sequence</b>	ADPVPIKYLP EENVHDADFG EQKDISEINL AAGLDFQGD ILLQKSRNGL RDPNTRWTFP IPYILADNLG LNAKGAILYA FEMFRLKSCV DFKPYEGESS YIIFQQFDGWCWSEVGDQHV G QNISIGQGCA YKAIIEHEIL HALGFYHEQS RTDRDDYVNI WWDQILSGYQ HNFDTYDDSL ITDLNTPYDY ESLMHYQPFS FNKNASVPTI TAKIPEFNSIIGQRLDFSAI DLERLNRMYN CTTHTLLDH CTFEKANICG MIQGTRDDTD WAHQDSAQAG EVDHTLLGQC TGAGYFMQFS

 Tel: 1-631-559-9269 1-516-512-3133

 Email: [info@creative-biomart.com](mailto:info@creative-biomart.com)  Fax: 1-631-938-8127

 45-1 Ramsey Road, Shirley, NY 11967, USA

TSSGSAEEAA LLESRIYLPK RKQQCLQFFY KMTGSPSDRL VVWVRRDDST  
 GNVRKLVKVQ TFQGDDHWNW KIAHVVLKEE QKFRYLFQGT KGDPQNSTGG  
 IYDDITLTE TPCPTGVWTV RNFSQVLENT SKGDKLQSPRFYNSEGYGFG  
 VTLYPNSRES SGYLRLAFHV CSGENDAILE WPVENRQVII TILDQEPDVR  
 NRMSSSMVFT TSKSHTSPAI NDTVIVDRPS RVGTYHTDCN  
 CFRSIDLGWSGFISHQMLKR RSFLKNDDLI IFVDFEDITH LSQHFFFFFFH

**Endotoxin** < 1.0 EU per 1 microgram of protein (determined by LAL method)

**Purity** > 85% by SDS - PAGE

**Storage** Can be stored at +4centigrade short term (1-2 weeks). For long term storage, aliquot and store at -20centigrade or -70centigrade. Avoid repeated freezing and thawing cycles.

**Concentration** 0.25mg/ml (determined by Absorbance at 280nm)

## GENE INFORMATION

**Gene Name** [MEP1A meprin A, alpha \(PABA peptide hydrolase\) \[ Homo sapiens \]](#)

**Official Symbol** [MEP1A](#)

**Synonyms** MEP1A; meprin A subunit alpha; PPHA; PPH alpha; endopeptidase-2

**Gene ID** [4224](#)

**mRNA Refseq** [NM\\_005588](#)

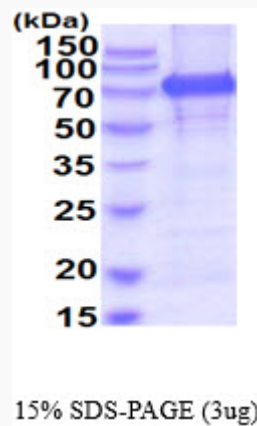
**Protein Refseq** [NP\\_005579](#)

 Tel: 1-631-559-9269 1-516-512-3133

 Email: [info@creative-biomart.com](mailto:info@creative-biomart.com)  Fax: 1-631-938-8127

 45-1 Ramsey Road, Shirley, NY 11967, USA

<b>MIM</b>	600388
<b>UniProt ID</b>	Q16819
<b>Chromosome Location</b>	6p12-p11
<b>Pathway</b>	Protein digestion and absorption, organism-specific biosystem; Protein digestion and absorption, conserved biosystem;
<b>Function</b>	metal ion binding; metalloendopeptidase activity; peptidase activity; zinc ion binding;



 Tel: 1-631-559-9269 1-516-512-3133

 Email: [info@creative-biomart.com](mailto:info@creative-biomart.com)  Fax: 1-631-938-8127

 45-1 Ramsey Road, Shirley, NY 11967, USA