

Recombinant Human MEP1A Protein, His-tagged

Cat. No. MEP1A-148H Lot. No. (See product label)

SPECIFICATION

Product Overview	Recombinant Human MEP1A(His213~Val506) fused with His tag at N-terminal was expressed in E. coli.
Species	Human
Source	E.coli
ProteinLength	His213~Val506
Description	MEP1A played an important role in many functions.
Form	PBS, pH7.4, containing 0.01% SKL, 1mM DTT, 5% Trehalose and Proclin300.
Molecular Mass	37.1kDa
Identity	Reconstitute in PBS or others
Endotoxin	<1.0EU per 1g (determined by the LAL method)
Purity	> 95%
Applications	Positive Control; Immunogen; SDS-PAGE; WB. If bio-activity of the protein is needed, please check active protein
Stability	The thermal stability is described by the loss rate. The loss rate was determined by

 Tel: 1-631-559-9269 1-516-512-3133

 Email: info@creative-biomart.com  Fax: 1-631-938-8127

 45-1 Ramsey Road, Shirley, NY 11967, USA

accelerated thermal degradation test, that is, incubate the protein at 37 centigrade for 48h, and no obvious degradation and precipitation were observed. The loss rate is less than 5% within the expiration date under appropriate storage condition.

Storage

Avoid repeated freeze/thaw cycles. Store at 2-8 centigrade for one month. Aliquot and store at -80 centigrade for 12 months.

Reconstitution

Reconstitute in PBS or others

GENE INFORMATION

Gene Name

MEP1A meprin A, alpha (PABA peptide hydrolase) [Homo sapiens]

Official Symbol

MEP1A

Synonyms

MEP1A; meprin A, alpha (PABA peptide hydrolase); meprin A subunit alpha; PPHA; PPH alpha; endopeptidase-2; PABA peptide hydrolase; bA268F1.1 (meprin A alpha (PABA peptide hydrolase)); N-benzoyl-L-tyrosyl-P-amino-benzoic acid hydrolase subunit alpha;

Gene ID

4224

mRNA Refseq

NM_005588

Protein Refseq

NP_005579

MIM

600388

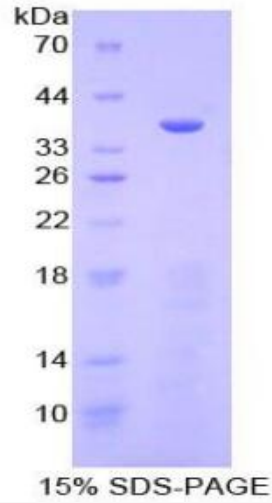
UniProt ID

Q16819

 Tel: 1-631-559-9269 1-516-512-3133

 Email: info@creative-biomart.com  Fax: 1-631-938-8127

 45-1 Ramsey Road, Shirley, NY 11967, USA



 Tel: 1-631-559-9269 1-516-512-3133

 Email: info@creative-biomart.com  Fax: 1-631-938-8127

 45-1 Ramsey Road, Shirley, NY 11967, USA