

Recombinant Human MEP1A protein, His-tagged

Cat. No. MEP1A-3143H **Lot. No.** (See product label)

SPECIFICATION

Product Overview	Recombinant Human MEP1A protein(NP_005579.2)(Met 1-Gln 601) was expressed in Human Cells, fused with a polyhistidine tag at the C-terminus.
Species	Human
Source	Human Cells
ProteinLength	1-601 aa
Form	Lyophilized from sterile PBS, pH 7.4.
Molecular Mass	The secreted recombinant human MEP1A (pro form) consists of 591 amino acids with the predicted molecular mass of 67.7 kDa. As a result of glycosylation, rh MEP1A migrates as an approximately 80 kDa band in SDS-PAGE under reducing conditions.
Endotoxin	< 1.0 EU per µg of the protein as determined by the LAL method.
Purity	> 90 % as determined by SDS-PAGE
Storage	Store it under sterile conditions at -20°C to -80°C upon receiving. Recommend to aliquot the protein into smaller quantities for optimal storage. Avoid repeated freeze-thaw cycles.
Reconstitution	It is recommended that sterile water be added to the vial to prepare a stock solution of 0.2 ug/ul. Centrifuge the vial at 4°C before opening to recover the entire contents.

 Tel: 1-631-559-9269 1-516-512-3133

 Email: info@creative-biomart.com  Fax: 1-631-938-8127

 45-1 Ramsey Road, Shirley, NY 11967, USA



GENE INFORMATION

Gene Name MEP1A meprin A, alpha (PABA peptide hydrolase) [Homo sapiens]

Official Symbol MEP1A

Synonyms MEP1A; meprin A, alpha (PABA peptide hydrolase); meprin A subunit alpha; PPHA; PPH alpha; endopeptidase-2; PABA peptide hydrolase; bA268F1.1 (meprin A alpha (PABA peptide hydrolase)); N-benzoyl-L-tyrosyl-P-amino-benzoic acid hydrolase subunit alpha;

Gene ID 4224

mRNA Refseq NM_005588

Protein Refseq NP_005579

MIM 600388

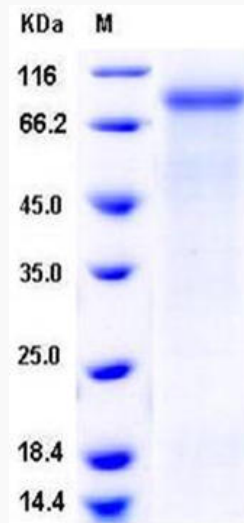
UniProt ID Q16819

 Tel: 1-631-559-9269 1-516-512-3133

 Email: info@creative-biomart.com  Fax: 1-631-938-8127

 45-1 Ramsey Road, Shirley, NY 11967, USA

SDS-PAGE



 Tel: 1-631-559-9269 1-516-512-3133

 Email: info@creative-biomart.com  Fax: 1-631-938-8127

 45-1 Ramsey Road, Shirley, NY 11967, USA