

## Recombinant Human MERTK protein, His-tagged

Cat. No. MERTK-149H Lot. No. (See product label)

### SPECIFICATION

<b>Product Overview</b>	Recombinant Human MERTK protein(Q1RMG3)(Met1-Ala323), fused with C-terminal His tag, was expressed in HEK293.
<b>Species</b>	Human
<b>Source</b>	HEK293
<b>ProteinLength</b>	Met1-Ala323
<b>Tag</b>	C-His
<b>Form</b>	Lyophilized from a 0.2 μm filtered solution of 20mM Tris-HCl, 150mM NaCl, pH 8.0.
<b>Molecular Mass</b>	36 KDa
<b>Endotoxin</b>	< 1 EU/μg as determined by LAL test.
<b>Purity</b>	Greater than 95% as determined by reducing SDS-PAGE.
<b>Storage</b>	Lyophilized protein should be stored at ≤ -20°C, stable for one year after receipt. Reconstituted protein solution can be stored at 2-8°C for 2-7 days. Aliquots of reconstituted samples are stable at ≤ -20°C for 3 months.
<b>Reconstitution</b>	Always centrifuge tubes before opening. Do not mix by vortex or pipetting. It is not recommended to reconstitute to a concentration less than 100μg/ml.

 Tel: 1-631-559-9269 1-516-512-3133

 Email: [info@creative-biomart.com](mailto:info@creative-biomart.com)  Fax: 1-631-938-8127

 45-1 Ramsey Road, Shirley, NY 11967, USA

Dissolve the lyophilized protein in distilled water.  
Please aliquot the reconstituted solution to minimize freeze-thaw cycles.

## GENE INFORMATION

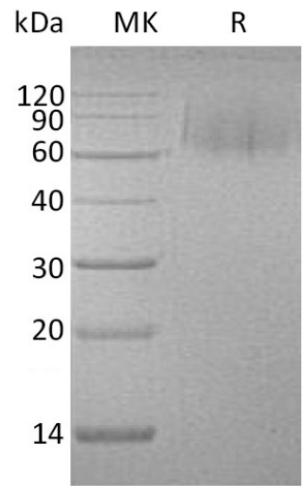
<b>Gene Name</b>	MERTK c-mer proto-oncogene tyrosine kinase [ Homo sapiens ]
<b>Official Symbol</b>	MERTK
<b>Synonyms</b>	MERTK; c-mer proto-oncogene tyrosine kinase; tyrosine-protein kinase Mer; mer; RP38; STK kinase; proto-oncogene c-Mer; MER receptor tyrosine kinase; receptor tyrosine kinase MerTK; MER; c-mer; MGC133349;
<b>Gene ID</b>	10461
<b>mRNA Refseq</b>	NM_006343
<b>Protein Refseq</b>	NP_006334
<b>MIM</b>	604705
<b>UniProt ID</b>	Q12866

 Tel: 1-631-559-9269 1-516-512-3133

 Email: [info@creative-biomart.com](mailto:info@creative-biomart.com)  Fax: 1-631-938-8127

 45-1 Ramsey Road, Shirley, NY 11967, USA

**SDS-PAGE**



 Tel: 1-631-559-9269 1-516-512-3133

 Email: [info@creative-biomart.com](mailto:info@creative-biomart.com)  Fax: 1-631-938-8127

 45-1 Ramsey Road, Shirley, NY 11967, USA