

## Recombinant Human MERTK Protein, GST-tagged

Cat. No. MERTK-4436H Lot. No. (See product label)

### SPECIFICATION

<b>Product Overview</b>	Human MERTK partial ORF ( NP_006334, 21 a.a. - 120 a.a.) recombinant protein with GST-tag at N-terminal.
<b>Species</b>	Human
<b>Source</b>	Wheat Germ
<b>Description</b>	This gene is a member of the MER/AXL/TYRO3 receptor kinase family and encodes a transmembrane protein with two fibronectin type-III domains, two Ig-like C2-type (immunoglobulin-like) domains, and one tyrosine kinase domain. Mutations in this gene have been associated with disruption of the retinal pigment epithelium (RPE) phagocytosis pathway and onset of autosomal recessive retinitis pigmentosa (RP). [provided by RefSeq]
<b>Molecular Mass</b>	36.63 kDa
<b>AA Sequence</b>	AITEAREEAKPYPLFPGPFGSLQTDHTPLLSLPHASGYQPALMFSPQTQGRPHTGN VAIPQVTSVESKPLPPLAFKHTVGHILSEHKGVKFNCSINVP
<b>Applications</b>	Enzyme-linked Immunoabsorbent Assay Western Blot (Recombinant protein) Antibody Production Protein Array
<b>Notes</b>	Best use within three months from the date of receipt of this protein.

 Tel: 1-631-559-9269 1-516-512-3133

 Email: [info@creative-biomart.com](mailto:info@creative-biomart.com)  Fax: 1-631-938-8127

 45-1 Ramsey Road, Shirley, NY 11967, USA

**Storage** Store at -80 centigrade. Aliquot to avoid repeated freezing and thawing.

**Storage Buffer** 50 mM Tris-HCl, 10 mM reduced Glutathione, pH=8.0 in the elution buffer.

## GENE INFORMATION

**Gene Name** MERTK c-mer proto-oncogene tyrosine kinase [ Homo sapiens ]

**Official Symbol** MERTK

**Synonyms** MERTK; c-mer proto-oncogene tyrosine kinase; tyrosine-protein kinase Mer; mer; RP38; STK kinase; proto-oncogene c-Mer; MER receptor tyrosine kinase; receptor tyrosine kinase MerTK; MER; c-mer; MGC133349;

**Gene ID** 10461

**mRNA Refseq** NM\_006343

**Protein Refseq** NP\_006334

**MIM** 604705

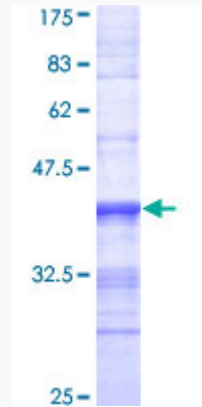
**UniProt ID** Q12866

 Tel: 1-631-559-9269 1-516-512-3133

 Email: [info@creative-biomart.com](mailto:info@creative-biomart.com)  Fax: 1-631-938-8127

 45-1 Ramsey Road, Shirley, NY 11967, USA

**Quality Control  
Testing**



12.5% SDS-PAGE Stained with Coomassie Blue

 Tel: 1-631-559-9269 1-516-512-3133

 Email: [info@creative-biomart.com](mailto:info@creative-biomart.com)  Fax: 1-631-938-8127

 45-1 Ramsey Road, Shirley, NY 11967, USA