

Active Recombinant Human MERTK Protein, GST-tagged

Cat. No. MERTK-4437H Lot. No. (See product label)

SPECIFICATION

Product Overview Human MERTK (NP_006334.2, 528 a.a. - 999 a.a.) partial recombinant protein with GST tag expressed in baculovirus infected Sf21 cells.

Species Human

Source Insect Cells

ProteinLength 528-999 a.a.

Description This gene is a member of the MER/AXL/TYRO3 receptor kinase family and encodes a transmembrane protein with two fibronectin type-III domains, two Ig-like C2-type (immunoglobulin-like) domains, and one tyrosine kinase domain. Mutations in this gene have been associated with disruption of the retinal pigment epithelium (RPE) phagocytosis pathway and onset of autosomal recessive retinitis pigmentosa (RP). [provided by RefSeq]

Form Liquid

Bio-activity The activity was measured by off-chip mobility shift assay. The enzyme was incubated with fluorescence-labeled substrate and Mg(or Mn)/ATP. The phosphorylated and unphosphorylated substrates were separated and detected by LabChip 3000.
Substrate: CSKtide.
ATP: 100 μ M.

 Tel: 1-631-559-9269 1-516-512-3133

 Email: info@creative-biomart.com  Fax: 1-631-938-8127

 45-1 Ramsey Road, Shirley, NY 11967, USA

Molecular Mass	80 kDa
Purity	97 % by SDS-PAGE/CBB staining
Applications	Functional Study SDS-PAGE
Storage	Store at -80 centigrade. Aliquot to avoid repeated freezing and thawing.
Storage Buffer	In 50 mM Tris-HCl, 150 mM NaCl, pH 7.5 (0.05% Brij35, 1 mM DTT, 10% glycerol)

GENE INFORMATION

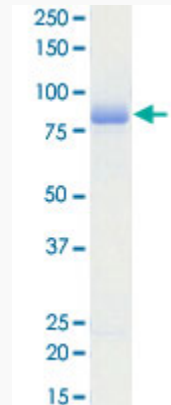
Gene Name	MERTK c-mer proto-oncogene tyrosine kinase [Homo sapiens]
Official Symbol	MERTK
Synonyms	MERTK; c-mer proto-oncogene tyrosine kinase; tyrosine-protein kinase Mer; mer; RP38; STK kinase; proto-oncogene c-Mer; MER receptor tyrosine kinase; receptor tyrosine kinase MerTK; MER; c-mer; MGC133349;
Gene ID	10461
mRNA Refseq	NM_006343
Protein Refseq	NP_006334
MIM	604705
UniProt ID	Q12866

 Tel: 1-631-559-9269 1-516-512-3133

 Email: info@creative-biomart.com  Fax: 1-631-938-8127

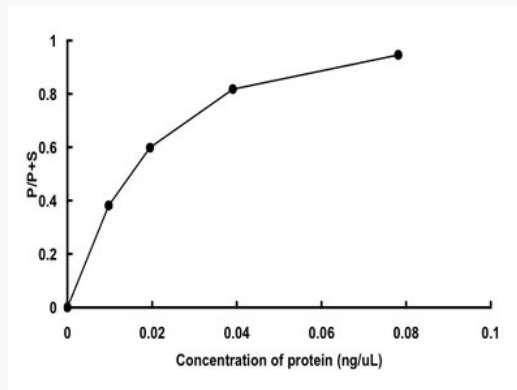
 45-1 Ramsey Road, Shirley, NY 11967, USA

**Quality Control
Testing**



Loading 1 μ g protein in SDS-PAGE

**Result of activity
analysis**



 Tel: 1-631-559-9269 1-516-512-3133

 Email: info@creative-biomart.com  Fax: 1-631-938-8127

 45-1 Ramsey Road, Shirley, NY 11967, USA