

# Recombinant Human MESP1 Protein (Arg149-Lys268), N-His tagged

Cat. No. MESP1-4988H    Lot. No. (See product label)

## SPECIFICATION

<b>Product Overview</b>	Recombinant human MESP1 (Arg149-Lys268) fused with the N-His tag was expressed in E. coli.
<b>Species</b>	Human
<b>Source</b>	E.coli
<b>ProteinLength</b>	Arg149-Lys268
<b>Form</b>	Lyophilized powder/frozen liquid
<b>Molecular Mass</b>	14.86 kDa
<b>Purity</b>	>90% as determined by SDS-PAGE.
<b>Notes</b>	For research use only.
<b>Storage</b>	Use a manual defrost freezer and avoid repeated freeze thaw cycles. Store at 2 to 8 centigrade for one week. Store at -20 to -80 centigrade for twelve months from the date of receipt.
<b>Storage Buffer</b>	0.01M PBS, pH 7.4, 0.02% NLS
<b>Reconstitution</b>	Reconstitute in sterile water for a stock solution.

 Tel: 1-631-559-9269    1-516-512-3133

 Email: [info@creative-biomart.com](mailto:info@creative-biomart.com)     Fax: 1-631-938-8127

 45-1 Ramsey Road, Shirley, NY 11967, USA

**Shipping**

They are shipped out with dry ice/blue ice unless customers require otherwise.

**GENE INFORMATION**

**Gene Name** MESP1 mesoderm posterior 1 homolog (mouse) [ Homo sapiens (human) ]

**Official Symbol** MESP1

**Synonyms** MESP1; mesoderm posterior 1 homolog (mouse); mesoderm posterior protein 1; bHLHc5; MGC10676; class C basic helix-loop-helix protein 5;

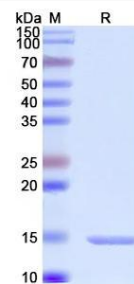
**Gene ID** 55897

**mRNA Refseq** NM\_018670

**Protein Refseq** NP\_061140

**MIM** 608689

**UniProt ID** Q9BRJ9

**SDS-PAGE**


 Tel: 1-631-559-9269 1-516-512-3133

 Email: [info@creative-biomart.com](mailto:info@creative-biomart.com)  Fax: 1-631-938-8127

 45-1 Ramsey Road, Shirley, NY 11967, USA