

# Recombinant Human MESP1 Protein, Myc/DDK-tagged, C13 and N15-labeled

**Cat. No.** MESP1-6020H    **Lot. No.** (See product label)

## SPECIFICATION

<b>Product Overview</b>	MESP1 MS Standard C13 and N15-labeled recombinant protein (NP_061140) with a C-terminal MYC/DDK tag, was expressed in HEK293 cells.
<b>Species</b>	Human
<b>Source</b>	HEK293
<b>Description</b>	MESP1 (Mesoderm Posterior BHLH Transcription Factor 1) is a Protein Coding gene. Diseases associated with MESP1 include Myasthenic Syndrome, Congenital, 20, Presynaptic and Double Outlet Right Ventricle. Among its related pathways are Cardiac Progenitor Differentiation. Gene Ontology (GO) annotations related to this gene include DNA-binding transcription factor activity and protein dimerization activity. An important paralog of this gene is MESP2.
<b>Molecular Mass</b>	28.3 kDa
<b>Purity</b>	> 80% as determined by SDS-PAGE and Coomassie blue staining
<b>Stability</b>	Stable for 3 months from receipt of products under proper storage and handling conditions.
<b>Storage</b>	Store at -80 centigrade. Avoid repeated freeze-thaw cycles.
<b>Concentration</b>	50 µg/mL as determined by BCA

 Tel: 1-631-559-9269    1-516-512-3133

 Email: [info@creative-biomart.com](mailto:info@creative-biomart.com)     Fax: 1-631-938-8127

 45-1 Ramsey Road, Shirley, NY 11967, USA

**Storage Buffer** 100 mM glycine, 25 mM Tris-HCl, pH 7.3.

## GENE INFORMATION

**Gene Name** MESP1 mesoderm posterior bHLH transcription factor 1 [ Homo sapiens (human) ]

**Official Symbol** MESP1

**Synonyms** MESP1; mesoderm posterior 1 homolog (mouse); mesoderm posterior protein 1; bHLHc5; MGC10676; class C basic helix-loop-helix protein 5;

**Gene ID** 55897

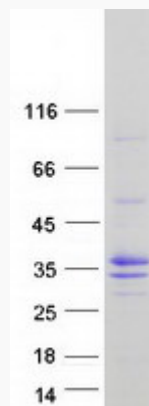
**mRNA Refseq** NM\_018670

**Protein Refseq** NP\_061140

**MIM** 608689

**UniProt ID** Q9BRJ9

## SDS-PAGE



 Tel: 1-631-559-9269 1-516-512-3133

 Email: [info@creative-biomart.com](mailto:info@creative-biomart.com)  Fax: 1-631-938-8127

 45-1 Ramsey Road, Shirley, NY 11967, USA