

Recombinant Full Length Human MET Protein, C-Flag-tagged

Cat. No. MET-1003HFL Lot. No. (See product label)

SPECIFICATION

Product Overview	Recombinant Full Length Human MET Protein, fused to Flag-tag at C-terminus, was expressed in Mammalian cells.
Species	Human
Source	Mammalian Cells
Description	<p>This gene encodes a member of the receptor tyrosine kinase family of proteins and the product of the proto-oncogene MET. The encoded preproprotein is proteolytically processed to generate alpha and beta subunits that are linked via disulfide bonds to form the mature receptor. Further processing of the beta subunit results in the formation of the M10 peptide, which has been shown to reduce lung fibrosis. Binding of its ligand, hepatocyte growth factor, induces dimerization and activation of the receptor, which plays a role in cellular survival, embryogenesis, and cellular migration and invasion. Mutations in this gene are associated with papillary renal cell carcinoma, hepatocellular carcinoma, and various head and neck cancers. Amplification and overexpression of this gene are also associated with multiple human cancers.</p>
Form	25 mM Tris HCl, pH 7.3, 100 mM glycine, 10% glycerol.
Molecular Mass	153 kDa
AA Sequence	MKAPAVLAPGILVLLFTLVQRSNGECKEALAKSEMNVNMKYQLPNFTAETPIQNVILH EHHIFLGATNYI YVLNEEDLQKVAEYKTGPVLEHPDCFCQDCSSKANLSGGVWKD

 Tel: 1-631-559-9269 1-516-512-3133

 Email: info@creative-biomart.com  Fax: 1-631-938-8127

 45-1 Ramsey Road, Shirley, NY 11967, USA

NINMALVVDTYDDQLISCGSVNRGT CQRHVFPNHHTADIQSEVHCIFSPQIEEPSQ
CPDCVVSALGAKVLSSVKDRFINFFVGN TINSSYFPDHP LHSISVRRLLKETKDGFMF
LTDQSYIDVLPFRDSYPIKYVHAFESNNFIYFLTVQRETLD AQTFFHTRIIR FCSINSGL
HSYMEMPLECILTEKRKKRSTKKEVFNILQAAYVSKPGAQLARQIGASLND DILFGVF
AQSK PDSAEPMDRSAMCAFPKIYVNDFFNKIVNKNNV RCLQHFYGNHEHCFNRTL
LRNSSGCEARRDEYRTEF TTALQRVDLFGMGQFSEVLLTSISTFIKGDLTIANLGTSEG
RFMQVVVSRSGPSTPHVNFLLD SHPV SPEV IVEHTLNQNGYTLVITGKKITKIPLNGL
GCRHFQSCSQCLSAPPFVQCGWCHDKCVRSEEC LSGTWTQOI CLPAIYKVFNPNSA
PLEGGTRLTICGWDFGFRNNKFDLKKTRVLLGNESCTLT LSESTMNTLKCTVGPA
M NKHFNMSIIISNGHGTTQYSTFSYVDPVITSISPKYGP MAGGTLT LTGNYLNSGNS
RHISIGGKTCTLK SVSNSILECYTPAQTISTEFAV KLIKIDLANRETSIFS YREDPIVYEIH
PTKSFISGGSTITGVGKNLNSV SVPRMVIN VHEAGRNF TVACQHRNSEIICCTPSL
QQLNLQLPLKTKAFFMLDGILSKYFDLIYVHNPV FKPFEK PVMISMGNENVLEIKGND
IDPEAVKGEVLKVG NKSCENIHLHSEAVLCTVPNDLLKLNSELNIE WKQAISSTVLGK
VIVQPDQNFTGLIAGVVSISTALLLLGFFLWLK KRKQIKDLGSELVRYDARVHTPHL
DRLVSARSVSP TTEMVSNESVDYRATFPEDQFPNSSQNGSCRQVQYPLTDMSPILT
SGDS DISSPLLQNT VHIDLSALNPELVQAVQHVVIGPSSLIVHFNEVIGRGHFGCVYH
GTL LDNDGKKIHC AVKSLNRITDIGE VSQFLTEGIIMKDF SHPNVLSLLGICLRSEGPS
LVVLPYMKHGD LRNFIRNETHNPTVKDLIGFGLQVAK GMKYLASKKFVHRDLAARN
CMLDEKFTVKVAD FGLARDMYDKEYYSVHNKTGAKLPVKWMALES LQTQKF TTKS
DVWSFGVLLWELMTRGAPPYPDVNTFDITVYLLQGRRL LQPEYCPDPLYEVMLKCW
HPKAEMRPSF
SELVSRISAIFSTFIGEHYVHV NATYVNVKCVAPYPSLLSSEDNADDEVDTRPASFE
TSTRTRPLEQKLISEEDLAANDILDYKDDDDKV

Purity > 80% as determined by SDS-PAGE and Coomassie blue staining.

Stability Stable for 12 months from the date of receipt of the product under proper storage and handling conditions. Avoid repeated freeze-thaw cycles.

 Tel: 1-631-559-9269 1-516-512-3133

 Email: info@creative-biomart.com  Fax: 1-631-938-8127

 45-1 Ramsey Road, Shirley, NY 11967, USA

Storage	Store at -80 centigrade.
Concentration	>50 ug/mL as determined by microplate BCA method.
Preparation	Recombinant protein was captured through anti-DDK affinity column followed by conventional chromatography steps.
Protein Families	Druggable Genome, Protein Kinase, Transmembrane
Protein Pathways	Adherens junction, Axon guidance, Colorectal cancer, Cytokine-cytokine receptor interaction, Endocytosis, Epithelial cell signaling in Helicobacter pylori infection, Focal adhesion, Melanoma, Pathways in cancer, Renal cell carcinoma
Full Length	Full L.

GENE INFORMATION

Gene Name	MET MET proto-oncogene, receptor tyrosine kinase [Homo sapiens (human)]
Official Symbol	MET
Synonyms	DA11; HGFR; AUTS9; RCCP2; c-Met; DFNB97
Gene ID	4233
mRNA Refseq	NM_000245.4
Protein Refseq	NP_000236.2
MIM	164860

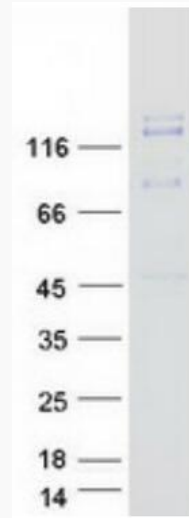
 Tel: 1-631-559-9269 1-516-512-3133

 Email: info@creative-biomart.com  Fax: 1-631-938-8127


 45-1 Ramsey Road, Shirley, NY 11967, USA

UniProt ID


P08581



Coomassie blue staining of purified MET protein.

 Tel: 1-631-559-9269 1-516-512-3133

 Email: info@creative-biomart.com  Fax: 1-631-938-8127

 45-1 Ramsey Road, Shirley, NY 11967, USA