

Recombinant Human MET protein, His-Avi-tagged

Cat. No. MET-105H **Lot. No.** (See product label)

SPECIFICATION

| | |
|-------------------------|--|
| Product Overview | Recombinant Human HGFR/c-MET Protein is expressed from mammalian with a poly-His and Avi tag at the C-terminal. It contains Glu 25 - Thr 932. |
| Species | Human |
| Source | HEK293 |
| ProteinLength | It contains Glu 25 - Thr 932 . |
| Description | <p>c-Met, also called tyrosine-protein kinase Met or hepatocyte growth factor receptor (HGFR), is a protein that in humans is encoded by the MET gene. The protein possesses tyrosine kinase activity. The primary single chain precursor protein is post-translationally cleaved to produce the alpha and beta subunits, which are disulfide linked to form the mature receptor. Following activation by ligand, interacts with the PI3-kinase subunit PIK3R1, PLCG1, SRC, GRB2, STAT3 or the adapter GAB1. Recruitment of these downstream effectors by MET leads to the activation of several signaling cascades including the RAS-ERK, PI3 kinase-AKT, or PLCgamma-PKC. The RAS-ERK activation is associated with the morphogenetic effects while PI3K/AKT coordinates prosurvival effects. During embryonic development, MET signaling.</p> |
| Form | Supplied as 0.22um filtered solution in PBS (pH 7.4). |
| Molecular Mass | The Human HGFR/c-MET Protein has a calculated MW of 104.6 kDa .As a result of glycosylation, the protein migrates as 80-85 kDa under reducing (R) condition (Bis- |

 Tel: 1-631-559-9269 1-516-512-3133

 Email: info@creative-biomart.com  Fax: 1-631-938-8127

 45-1 Ramsey Road, Shirley, NY 11967, USA


| | |
|-----------------------|---|
| | Tris PAGE) |
| Endotoxin | Less than 0.05 EU per ug by the LAL method. |
| Purity | > 95% as determined by Bis-Tris PAGE; > 95% as determined by HPLC |
| Storage | The product should be stored at -70°C. Please do not repeated freeze-thaw cycles. |
| Reconstitution | It is recommended that sterile water be added to the vial to prepare a stock solution of 0.2 ug/ul. Centrifuge the vial at 4°C before opening to recover the entire contents. |

GENE INFORMATION

| | |
|------------------------|--|
| Gene Name | MET met proto-oncogene (hepatocyte growth factor receptor) [Homo sapiens] |
| Official Symbol | MET |
| Synonyms | MET; oncogene MET; Proto-oncogene c-Met ;HGF R; HGF receptor; HGF/SF receptor; HGFR;AUTS9; cMET; c-MET; EC 2.7.10; EC 2.7.10.1; hepatocyte growth factor receptor; Met (c-Met); met proto-oncogene (hepatocyte growth factor receptor); met proto-oncogene tyrosine kinase; RCCP2; Scatter factor receptor; SF receptor; Tyrosine-protein kinase Met |
| Gene ID | 4233 |
| mRNA Refseq | NM_000245 |
| Protein Refseq | NP_000236 |
| MIM | 164860 |

 Tel: 1-631-559-9269 1-516-512-3133

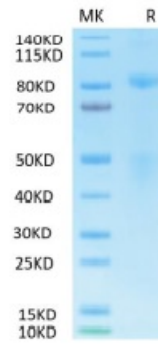
 Email: info@creative-biomart.com  Fax: 1-631-938-8127

 45-1 Ramsey Road, Shirley, NY 11967, USA

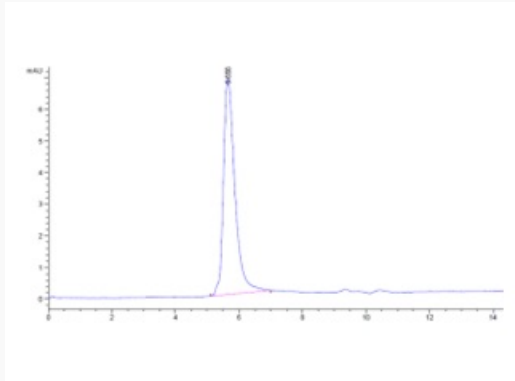
UniProt ID


P08581

Tris-Bis PAGE



HPLC data

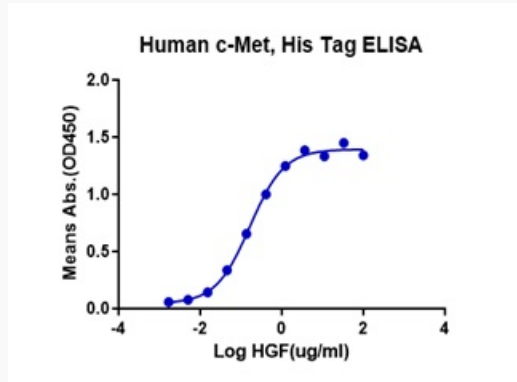



 Tel: 1-631-559-9269 1-516-512-3133

 Email: info@creative-biomart.com  Fax: 1-631-938-8127


 45-1 Ramsey Road, Shirley, NY 11967, USA

ELISA data



 Tel: 1-631-559-9269 1-516-512-3133

 Email: info@creative-biomart.com  Fax: 1-631-938-8127

 45-1 Ramsey Road, Shirley, NY 11967, USA