

Recombinant Human MET Protein (Glu25-Gly519), C-His tagged

Cat. No. MET-2113H Lot. No. (See product label)

SPECIFICATION

Product Overview	Recombinant human MET (Glu25-Gly519) fused with C-terminal His tag was expressed in Mammalian cells.
Species	Human
Source	Mammalian Cells
ProteinLength	Glu25-Gly519
Form	Lyophilized powder/frozen liquid
Molecular Mass	54.45 kDa
Purity	>90% as determined by SDS-PAGE
Notes	For research use only.
Storage	Use a manual defrost freezer and avoid repeated freeze thaw cycles. Store at 2 to 8 centigrade for one week. Store at -20 to -80 centigrade for twelve months from the date of receipt.
Storage Buffer	Supplied as solution form in PBS or lyophilized from PBS.
Reconstitution	Reconstitute in sterile water for a stock solution.

 Tel: 1-631-559-9269 1-516-512-3133

 Email: info@creative-biomart.com  Fax: 1-631-938-8127

 45-1 Ramsey Road, Shirley, NY 11967, USA

Shipping They are shipped out with dry ice/blue ice unless customers require otherwise.

GENE INFORMATION

Gene Name MET met proto-oncogene (hepatocyte growth factor receptor) [Homo sapiens (human)]

Official Symbol MET

Synonyms MET; met proto-oncogene (hepatocyte growth factor receptor); hepatocyte growth factor receptor; HGFR; RCCP2; SF receptor; HGF receptor; oncogene MET; HGF/SF receptor; proto-oncogene c-Met; scatter factor receptor; tyrosine-protein kinase Met; met proto-oncogene tyrosine kinase; AUTS9; c-Met;

Gene ID 4233

mRNA Refseq NM_000245

Protein Refseq NP_000236

MIM 164860

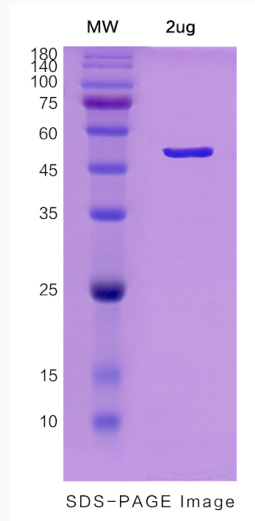
UniProt ID P08581

 Tel: 1-631-559-9269 1-516-512-3133

 Email: info@creative-biomart.com  Fax: 1-631-938-8127

 45-1 Ramsey Road, Shirley, NY 11967, USA

SDS-PAGE



 Tel: 1-631-559-9269 1-516-512-3133

 Email: info@creative-biomart.com  Fax: 1-631-938-8127

 45-1 Ramsey Road, Shirley, NY 11967, USA