

Recombinant Human MET protein, His-tagged

Cat. No. MET-213H Lot. No. (See product label)

SPECIFICATION

Product Overview	Recombinant Human MET protein(P08581-1)(Glu25-Thr932) is expressed from HEK293 with His tag at the C-terminus.
Species	Human
Source	HEK293
ProteinLength	25-932 aa
Form	Lyophilized from 0.22 μ m filtered solution in PBS (pH 7.4).
Bio-activity	Immobilized Human HGF R, His Tag at 1 μ g/ml (100 μ l/well) on the plate. Dose response curve for Human HGF, hFc Tag with the EC50 of 10.1ng/ml determined by ELISA.
Molecular Mass	The mature form of HGF R is a heterodimer which can be cleaved into α and β chain. The protein has a predicted MW of 32.5 kDa (α chain) and 72.1 kDa (β chain). Due to glycosylation, the protein migrates to 45-60 kDa (α subunit) and 80-100 kDa (β subunit) based on Bis-Tris PAGE result.
Endotoxin	Less than 0.1 EU per μ g by the LAL method.
Purity	> 95% as determined by Bis-Tris PAGE > 95% as determined by HPLC
Storage	-20 to -80°C for 12 months as supplied from date of receipt. -80°C for 3 months after

 Tel: 1-631-559-9269 1-516-512-3133

 Email: info@creative-biomart.com  Fax: 1-631-938-8127

 45-1 Ramsey Road, Shirley, NY 11967, USA

reconstitution. Recommend to aliquot the protein into smaller quantities for optimal storage. Please minimize freeze-thaw cycles.

Reconstitution Dissolve the lyophilized protein in distilled water.

GENE INFORMATION

Gene Name MET met proto-oncogene (hepatocyte growth factor receptor) [Homo sapiens]

Official Symbol MET

Synonyms MET; met proto-oncogene (hepatocyte growth factor receptor); hepatocyte growth factor receptor; HGFR; RCCP2; SF receptor; HGF receptor; oncogene MET; HGF/SF receptor; proto-oncogene c-Met; scatter factor receptor; tyrosine-protein kinase Met; met proto-oncogene tyrosine kinase; AUTS9; c-Met;

Gene ID 4233

mRNA Refseq NM_000245

Protein Refseq NP_000236

MIM 164860

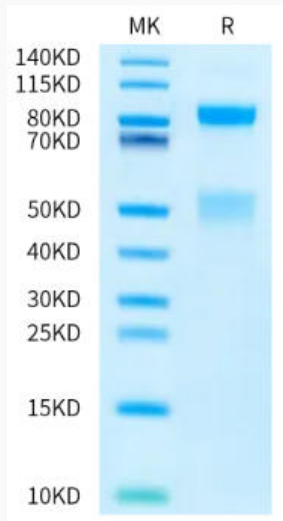
UniProt ID P08581

 Tel: 1-631-559-9269 1-516-512-3133

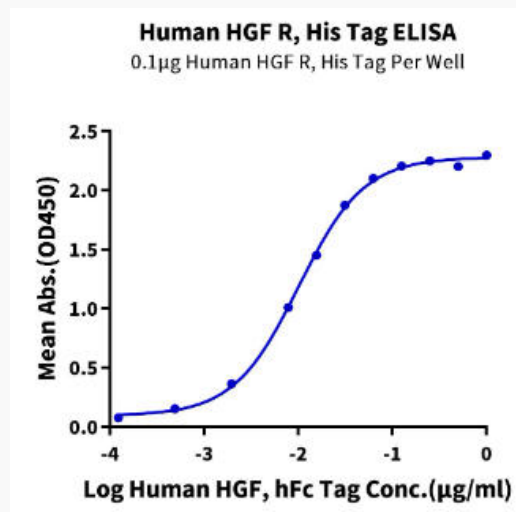
 Email: info@creative-biomart.com  Fax: 1-631-938-8127

 45-1 Ramsey Road, Shirley, NY 11967, USA

Bis-Tris PAGE



ELISA Data



Tel: 1-631-559-9269 1-516-512-3133

Email: info@creative-biomart.com Fax: 1-631-938-8127

45-1 Ramsey Road, Shirley, NY 11967, USA