

## Active Recombinant Human MET Protein, His-Fc-tagged

Cat. No. MET-219H Lot. No. (See product label)

### SPECIFICATION

<b>Product Overview</b>	Active Recombinant Human MET Protein(Met 1-Thr 932)(NP_000236) was expressed in HEK293, fused with the C-terminal polyhistidine-tagged Fc region of human IgG1 at the C-terminus.
<b>Species</b>	Human
<b>Source</b>	HEK293
<b>ProteinLength</b>	1-932 aa
<b>Form</b>	Lyophilized from sterile PBS, pH 7.4.
<b>Bio-activity</b>	Measured by its binding ability in a functional ELISA. Immobilized recombinant human HGF at 1 µg/ml (100ul/well) can bind Human c-MET / HGFR with a linear range of 0.31-160ng/ml. Scatchard analysis showed the affinity constant (Kd) of human HGF bound to human c-MET / HGFR was 0.52 nM.
<b>Molecular Mass</b>	The mature recombinant human c-Met/Fc is a disulfide-linked tetramer composed of two proteolytically cleaved α and β subunits. Each α and β together with the C-terminal Fc tag consists of 1155 amino acids and has a predicted molecular mass of 129.5 (α =32.5 + Fc tagged β=97) kDa. The rh c-MET/Fc heterodimer thus migrates with apparent molecular mass of approximately 45 kDa and 120 kDa respectively in SDS-PAGE under reducing conditions due to glycosylation.
<b>Endotoxin</b>	< 1.0 EU per

 Tel: 1-631-559-9269 1-516-512-3133

 Email: [info@creative-biomart.com](mailto:info@creative-biomart.com)  Fax: 1-631-938-8127

 45-1 Ramsey Road, Shirley, NY 11967, USA

	µg of the protein as determined by the LAL method.
<b>Purity</b>	> 95 % as determined by SDS-PAGE
<b>Storage</b>	Store it under sterile conditions at -20°C to -80°C upon receiving. Recommend to aliquot the protein into smaller quantities for optimal storage. Avoid repeated freeze-thaw cycles.
<b>Reconstitution</b>	It is recommended that sterile water be added to the vial to prepare a stock solution of 0.2 ug/ul. Centrifuge the vial at 4°C before opening to recover the entire contents.

## GENE INFORMATION

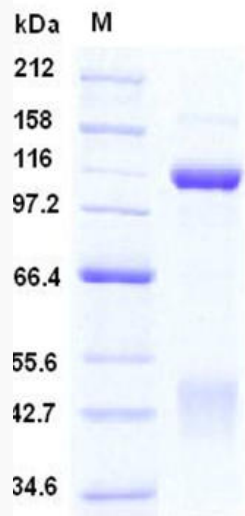
<b>Gene Name</b>	MET met proto-oncogene (hepatocyte growth factor receptor) [ Homo sapiens ]
<b>Official Symbol</b>	MET
<b>Synonyms</b>	MET; met proto-oncogene (hepatocyte growth factor receptor); hepatocyte growth factor receptor; HGFR; RCCP2; SF receptor; HGF receptor; oncogene MET; HGF/SF receptor; proto-oncogene c-Met; scatter factor receptor; tyrosine-protein kinase Met; met proto-oncogene tyrosine kinase; AUTS9; c-Met;
<b>Gene ID</b>	4233
<b>mRNA Refseq</b>	NM_000245
<b>Protein Refseq</b>	NP_000236
<b>MIM</b>	164860
<b>UniProt ID</b>	P08581

 Tel: 1-631-559-9269 1-516-512-3133

 Email: [info@creative-biomart.com](mailto:info@creative-biomart.com)  Fax: 1-631-938-8127

 45-1 Ramsey Road, Shirley, NY 11967, USA

SDS-PAGE



 Tel: 1-631-559-9269 1-516-512-3133

 Email: [info@creative-biomart.com](mailto:info@creative-biomart.com)  Fax: 1-631-938-8127

 45-1 Ramsey Road, Shirley, NY 11967, USA