

Recombinant Active Human MET Protein (956-end), N-His-tagged

Cat. No. MET-23H Lot. No. (See product label)

SPECIFICATION

Product Overview	Recombinant human MET (956-end) was expressed by baculovirus in Sf9 insect cells using an N-terminal His tag.
Species	Human
Source	Sf9 Cells
ProteinLength	956-end
Description	MET is a proto-oncogene that encodes a transmembrane growth factor receptor which is a heterodimer of two disulphide linked chains of 50 kDa (alpha) and 145 kDa (beta). MET is widely expressed in the kidney, brain, lung, skin, and embryonic tissue. Hepatocyte growth factor (HGF) binds to MET and activates its tyrosine kinase activity. MET is overexpressed and activated in a variety of human cancers including pancreatic, colon, gastric, cervical and ovarian cancers and has been shown to be involved in tumor cell migration and invasion.
Bio-activity	The specific activity of MET was determined to be 24 nmol/min/mg as per activity assay protocol.
Molecular Mass	Observed MW: ~60 kDa. Calculated MW: ~50 kDa.
Purity	The purity of MET was determined to be > 70 % by densitometry.

 Tel: 1-631-559-9269 1-516-512-3133

 Email: info@creative-biomart.com  Fax: 1-631-938-8127

 45-1 Ramsey Road, Shirley, NY 11967, USA

Stability	One year at -70 centigrade from date of shipment.
Storage	Store product at -70 centigrade. For optimal storage, aliquot target into smaller quantities after centrifugation and store at recommended temperature. For most favorable performance, avoid repeated handling and multiple freeze/thaw cycles.
Concentration	0.1 µg/µL
Storage Buffer	Recombinant protein stored in 50mM sodium phosphate, pH 7.5, 300mM NaCl, 150mM imidazole, 0.25mM DTT, 25% glycerol.
Shipping	Dry ice

GENE INFORMATION

Gene Name	MET met proto-oncogene (hepatocyte growth factor receptor) [Homo sapiens (human)]
Official Symbol	MET
Synonyms	MET; met proto-oncogene (hepatocyte growth factor receptor); hepatocyte growth factor receptor; HGFR; RCCP2; SF receptor; HGF receptor; oncogene MET; HGF/SF receptor; proto-oncogene c-Met; scatter factor receptor; tyrosine-protein kinase Met; met proto-oncogene tyrosine kinase; AUTS9; c-Met;
Gene ID	4233
mRNA Refseq	NM_000245
Protein Refseq	NP_000236

 Tel: 1-631-559-9269 1-516-512-3133

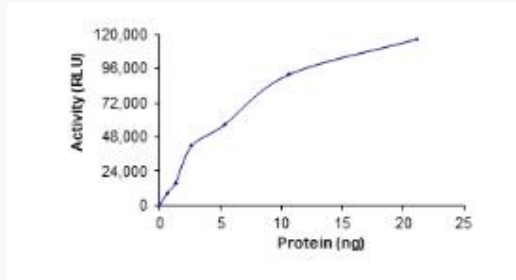
 Email: info@creative-biomart.com  Fax: 1-631-938-8127

 45-1 Ramsey Road, Shirley, NY 11967, USA

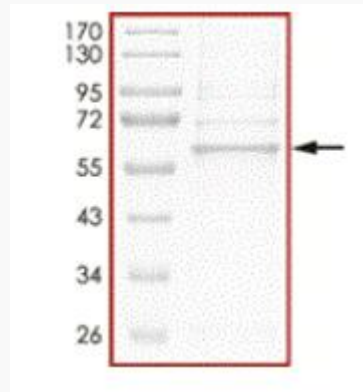
MIM 164860

UniProt ID P08581

Activity



Purity



Tel: 1-631-559-9269 1-516-512-3133

Email: info@creative-biomart.com Fax: 1-631-938-8127

45-1 Ramsey Road, Shirley, NY 11967, USA