

Active Recombinant Human MET Protein, GST-tagged

Cat. No. MET-35H Lot. No. (See product label)

SPECIFICATION

Product Overview	Recombinant human MET (Del Ex14) or (Del 963-1009) (956-end) was expressed by baculovirus in Sf9 insect cells using an N-terminal GST tag.
Species	Human
Source	Insect Cells
ProteinLength	956-end a.a.
Description	<p>This gene encodes a member of the receptor tyrosine kinase family of proteins and the product of the proto-oncogene MET. The encoded preproprotein is proteolytically processed to generate alpha and beta subunits that are linked via disulfide bonds to form the mature receptor. Further processing of the beta subunit results in the formation of the M10 peptide, which has been shown to reduce lung fibrosis. Binding of its ligand, hepatocyte growth factor, induces dimerization and activation of the receptor, which plays a role in cellular survival, embryogenesis, and cellular migration and invasion. Mutations in this gene are associated with papillary renal cell carcinoma, hepatocellular carcinoma, and various head and neck cancers. Amplification and overexpression of this gene are also associated with multiple human cancers.</p>
Bio-activity	38 nmol/min/mg
Molecular Mass	71 kDa

 Tel: 1-631-559-9269 1-516-512-3133

 Email: info@creative-biomart.com  Fax: 1-631-938-8127

 45-1 Ramsey Road, Shirley, NY 11967, USA

Purity	> 85 %
Stability	One year at -70 centigrade from date of shipment.
Storage	Store product at -70 centigrade. For optimal storage, aliquot target into smaller quantities after centrifugation and store at recommended temperature. For most favorable performance, avoid repeated handling and multiple freeze/thaw cycles.
Concentration	0.1 µg/µL
Storage Buffer	50 mM Tris-HCl, pH 7.5, 150 mM NaCl, 10 mM glutathione, 0.1 mM EDTA, 0.25 mM DTT, 0.1 mM PMSF, 25 % glycerol
Shipping	Dry ice

GENE INFORMATION

Gene Name	MET MET proto-oncogene, receptor tyrosine kinase [Homo sapiens (human)]
Official Symbol	MET
Synonyms	MET; MET proto-oncogene, receptor tyrosine kinase; HGFR; AUTS9; RCCP2; c-Met; DFNB97; hepatocyte growth factor receptor; HGF receptor; HGF/SF receptor; SF receptor; proto-oncogene c-Met; scatter factor receptor; tyrosine-protein kinase Met; EC 2.7.10.1
Gene ID	4233
mRNA Refseq	NM_000245
Protein Refseq	NP_000236

 Tel: 1-631-559-9269 1-516-512-3133

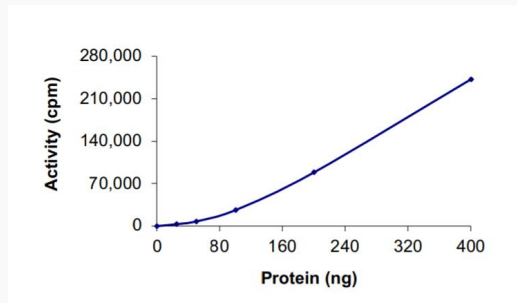
 Email: info@creative-biomart.com  Fax: 1-631-938-8127

 45-1 Ramsey Road, Shirley, NY 11967, USA

MIM 164860

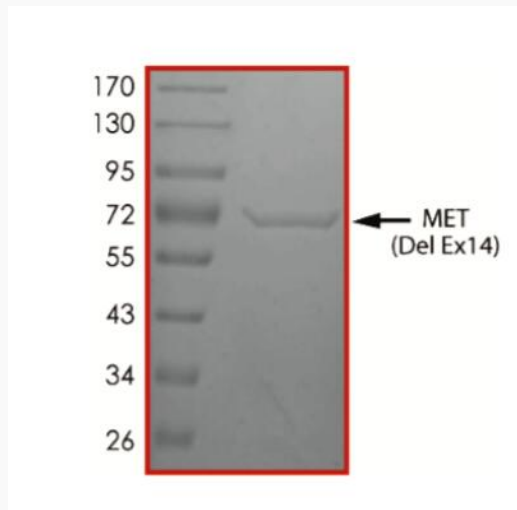
UniProt ID P08581

Specific Activity



The specific activity of MET (Del Ex14) was determined to be 38 nmol/min/mg as per activity assay protocol.

Purity



Tel: 1-631-559-9269 1-516-512-3133

Email: info@creative-biomart.com Fax: 1-631-938-8127

45-1 Ramsey Road, Shirley, NY 11967, USA