

Active Recombinant Human MET Protein, GST/His-tagged

Cat. No. MET-4420H Lot. No. (See product label)

SPECIFICATION

Product Overview	Human MET (NM_000245.2, 956 a.a. - 1390 a.a.) partial recombinant protein with GST-His tag expressed in Sf9 cells.
Species	Human
Source	Insect Cells
ProteinLength	956.-1390. a.a.
Description	The proto-oncogene MET product is the hepatocyte growth factor receptor and encodes tyrosine-kinase activity. The primary single chain precursor protein is post-translationally cleaved to produce the alpha and beta subunits, which are disulfide linked to form the mature receptor. Various mutations in the MET gene are associated with papillary renal carcinoma. Two transcript variants encoding different isoforms have been found for this gene. [provided by RefSeq]
Form	Liquid
Bio-activity	105 pmol/μg x min
Molecular Mass	78.788 kDa
AA Sequence	KKRKQIKDLGSELVRYDARVHTPHLDRLVSARSVSPTTEMVSNESVDYRATFPEDQ FPNSSQNGSCRQVQYPLTDMSPILTSGDSDISSPLLQNTVHIDLSALNPELVQAVQH VVIGPSSLIVHFNEVIGRGHFGCVYHGTLNDNDGKKIHCVAKSLNRITDIGEVSQFLTE

 Tel: 1-631-559-9269 1-516-512-3133

 Email: info@creative-biomart.com  Fax: 1-631-938-8127

 45-1 Ramsey Road, Shirley, NY 11967, USA



GIIMKDFSHPNVLSLLGICLRSEGSPLVVLVLYMKHGDLRNFIRNETHNPTVKDLIGFGL
QVAKAMKYLASKKFVHRDLAARNCMLDEKFTVKVADFGLARDMYDKEYYSVHNKT
GAKLPVKWMALESQTQKFTTKSDVWSFGVVLWELMTRGAPPYPDVNTFDITVYLL
QGRLLQPEYCPDPLYEVMLKWCWHPKAEMRPSFSELVSRISAIFSTFIGEHYVHVNA
TYVNVKCVAPYPSLLSSEDNADDEVDRPASFWETS

Applications Functional Study
SDS-PAGE

Storage Store at -80 centigrade. Aliquot to avoid repeated freezing and thawing.

Concentration 0.144 µg/µL

Storage Buffer In 50 mM Hepes, 100 mM NaCl, pH 7.5. (5 mM DTT, 4 mM reduced glutathione, 20% glycerol)

GENE INFORMATION

Gene Name MET met proto-oncogene (hepatocyte growth factor receptor) [Homo sapiens]

Official Symbol MET

Synonyms MET; met proto-oncogene (hepatocyte growth factor receptor); hepatocyte growth factor receptor; HGFR; RCCP2; SF receptor; HGF receptor; oncogene MET; HGF/SF receptor; proto-oncogene c-Met; scatter factor receptor; tyrosine-protein kinase Met; met proto-oncogene tyrosine kinase; AUTS9; c-Met;

Gene ID 4233

mRNA Refseq NM_000245

Tel: 1-631-559-9269 1-516-512-3133

Email: info@creative-biomart.com Fax: 1-631-938-8127

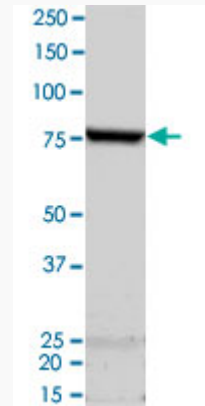
45-1 Ramsey Road, Shirley, NY 11967, USA

Protein Refseq NP_000236

MIM 164860

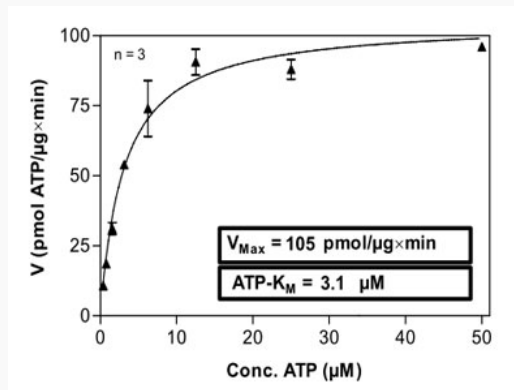
UniProt ID P08581

Quality Control Testing



2 µg/lane SDS-PAGE Stained with Coomassie Blue

Result of activity analysis



Tel: 1-631-559-9269 1-516-512-3133

Email: info@creative-biomart.com Fax: 1-631-938-8127

45-1 Ramsey Road, Shirley, NY 11967, USA