

## Recombinant Human MET protein, hFc-tagged

**Cat. No.** MET-6844H    **Lot. No.** (See product label)

### SPECIFICATION

<b>Product Overview</b>	Recombinant Human MET protein(P08581-1)(Glu25-Thr932), fused with C-terminal hFc tag, was expressed in HEK293.
<b>Species</b>	Human
<b>Source</b>	HEK293
<b>ProteinLength</b>	Glu25-Thr932
<b>Tag</b>	C-hFc
<b>Form</b>	Supplied as 0.22µm filtered solution in PBS (pH 7.4).
<b>Bio-activity</b>	Immobilized Human HGF, His Tag at 2ug/ml (100ul/Well) on the plate. Dose response curve for Human HGF R, hFc Tag with the EC50 of 9.9ng/ml determined by ELISA (QC Test).
<b>Molecular Mass</b>	The mature form of HGF R is a heterodimer which can be cleaved into α and β chain. The protein has a predicted MW of 32.5 kDa (α chain) and 72.1 kDa (β chain). Due to glycosylation, the protein migrates to 45-55 kDa and 90-110 kDa based on Tris-Bis PAGE result.
<b>Endotoxin</b>	Less than 1EU per µg by the LAL method.
<b>Purity</b>	> 95% as determined by Tris-Bis PAGE

 Tel: 1-631-559-9269    1-516-512-3133

 Email: [info@creative-biomart.com](mailto:info@creative-biomart.com)     Fax: 1-631-938-8127

 45-1 Ramsey Road, Shirley, NY 11967, USA

**Storage** Valid for 12 months from date of receipt when stored at -80°C. Recommend to aliquot the protein into smaller quantities for optimal storage. Please do not repeated freeze-thaw cycles.

**Reconstitution** It is recommended that sterile water be added to the vial to prepare a stock solution of 0.2 ug/ul. Centrifuge the vial at 4°C before opening to recover the entire contents.

## GENE INFORMATION

**Gene Name** MET met proto-oncogene (hepatocyte growth factor receptor) [ Homo sapiens ]

**Official Symbol** MET

**Synonyms** MET; met proto-oncogene (hepatocyte growth factor receptor); hepatocyte growth factor receptor; HGFR; RCCP2; SF receptor; HGF receptor; oncogene MET; HGF/SF receptor; proto-oncogene c-Met; scatter factor receptor; tyrosine-protein kinase Met; met proto-oncogene tyrosine kinase; AUTS9; c-Met;

**Gene ID** 4233

**mRNA Refseq** NM\_000245

**Protein Refseq** NP\_000236

**MIM** 164860

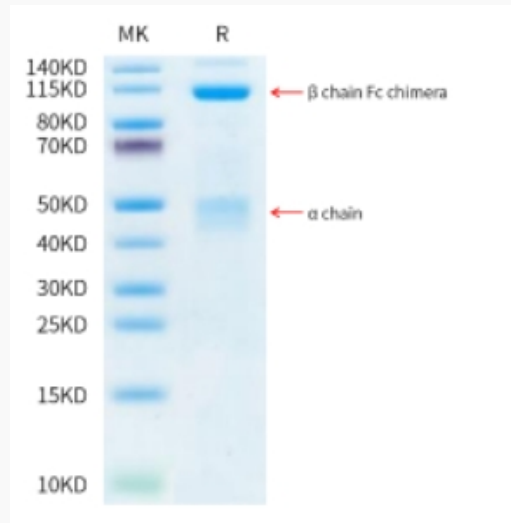
**UniProt ID** P08581

 Tel: 1-631-559-9269 1-516-512-3133

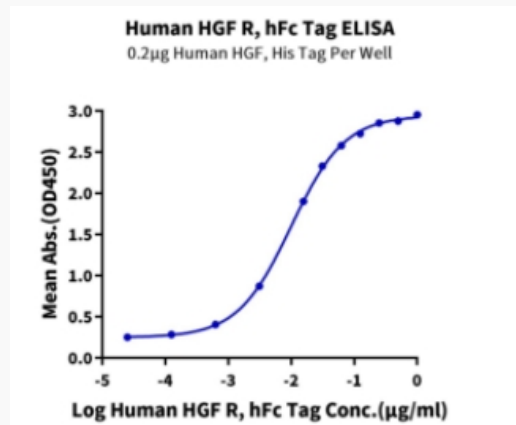
 Email: [info@creative-biomart.com](mailto:info@creative-biomart.com)  Fax: 1-631-938-8127

 45-1 Ramsey Road, Shirley, NY 11967, USA

**Tris-Bis PAGE**



**ELISA Data**



Tel: 1-631-559-9269 1-516-512-3133

Email: [info@creative-biomart.com](mailto:info@creative-biomart.com) Fax: 1-631-938-8127

45-1 Ramsey Road, Shirley, NY 11967, USA