

Active Recombinant Human MET protein, His & GST-tagged

Cat. No. MET-7295H Lot. No. (See product label)

SPECIFICATION

Product Overview	Active Recombinant Human MET protein(P08581-1) (Lys956-Ser1390) was expressed in Insect Cells, fused with the N-terminal polyhistidine-tagged GST tag at the N-terminus.
Species	Human
Source	Insect Cells
ProteinLength	956-1390 aa
Form	Supplied as sterile 20mM Tris, 500mM NaCl, pH 7.4, 10% glycerol, 3mM DTT.
Bio-activity	1. The specific activity was determined to be 10 nmol/min/mg using MBP as substrate. 2. Measured by its binding ability in a functional ELISA. Immobilized human HGFR (aa 956-1390) at 10 µg/ml (100 µl/well) can bind biotinylated human HGF-his with a linear range of 15.6-125 ng/ml.
Molecular Mass	The recombinant human MET /GST chimera consists of 672 amino acids and has a calculated molecular mass of 76.8 kDa. The recombinant protein migrates as an approximately 68 kDa band in SDS-PAGE under reducing conditions.
Endotoxin	< 1.0 EU per µg of the protein as determined by the LAL method.
Purity	> 97 % as determined by SDS-PAGE

 Tel: 1-631-559-9269 1-516-512-3133

 Email: info@creative-biomart.com  Fax: 1-631-938-8127

 45-1 Ramsey Road, Shirley, NY 11967, USA

Storage Store it under sterile conditions at -20°C to -80°C upon receiving. Recommend to aliquot the protein into smaller quantities for optimal storage. Avoid repeated freeze-thaw cycles.

Reconstitution It is recommended that sterile water be added to the vial to prepare a stock solution of 0.2 ug/ul. Centrifuge the vial at 4°C before opening to recover the entire contents.

GENE INFORMATION

Gene Name MET met proto-oncogene (hepatocyte growth factor receptor) [Homo sapiens]

Official Symbol MET

Synonyms MET; met proto-oncogene (hepatocyte growth factor receptor); hepatocyte growth factor receptor; HGFR; RCCP2; SF receptor; HGF receptor; oncogene MET; HGF/SF receptor; proto-oncogene c-Met; scatter factor receptor; tyrosine-protein kinase Met; met proto-oncogene tyrosine kinase; AUTS9; c-Met;

Gene ID 4233

mRNA Refseq NM_000245

Protein Refseq NP_000236

MIM 164860

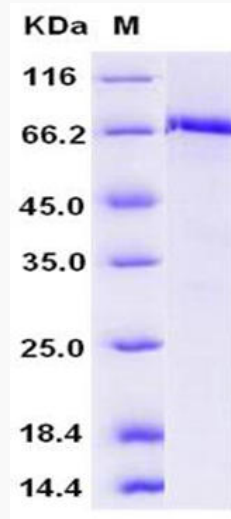
UniProt ID P08581


 Tel: 1-631-559-9269 1-516-512-3133

 Email: info@creative-biomart.com  Fax: 1-631-938-8127


 45-1 Ramsey Road, Shirley, NY 11967, USA

SDS-PAGE



 Tel: 1-631-559-9269 1-516-512-3133

 Email: info@creative-biomart.com  Fax: 1-631-938-8127

 45-1 Ramsey Road, Shirley, NY 11967, USA