

Recombinant Human MET Protein, Myc/DDK-tagged, C13 and N15-labeled

Cat. No. MET-957H **Lot. No.** (See product label)

SPECIFICATION

Product Overview	MET MS Standard C13 and N15-labeled recombinant protein (NP_000236) with a C-terminal MYC/DDK tag, was expressed in HEK293 cells.
Species	Human
Source	HEK293
Description	<p>This gene encodes a member of the receptor tyrosine kinase family of proteins and the product of the proto-oncogene MET. The encoded preproprotein is proteolytically processed to generate alpha and beta subunits that are linked via disulfide bonds to form the mature receptor. Further processing of the beta subunit results in the formation of the M10 peptide, which has been shown to reduce lung fibrosis. Binding of its ligand, hepatocyte growth factor, induces dimerization and activation of the receptor, which plays a role in cellular survival, embryogenesis, and cellular migration and invasion. Mutations in this gene are associated with papillary renal cell carcinoma, hepatocellular carcinoma, and various head and neck cancers. Amplification and overexpression of this gene are also associated with multiple human cancers.</p>
Molecular Mass	155.54 kDa
AA Sequence	MKAPAVLAPGILVLLFTLVQRSNGECKEALAKSEMNVNMKYQLPNFTAETPIQNVILH EHHIFLGATNYIYVLNEEDLQKVAEYKTGPVLEHPDCFCQDCSSKANLSGGVWKD

 Tel: 1-631-559-9269 1-516-512-3133

 Email: info@creative-biomart.com  Fax: 1-631-938-8127

 45-1 Ramsey Road, Shirley, NY 11967, USA

NINMALVVDTYDDQLISCGSVNRGTCQRHVFPNHHTADIQSEVHCIFSPQIEEPSQ
 CPDCVVSALGAKVLSSVKDRFINFFVGN TINSSYFPDHPHLSISVRRLKETKDGFMFL
 TDQSYIDVLPFRDSYPIKYVHAFESNNFIYFLTVQRETLDAQTFHTRIIRFCSINSGLH
 SYMEMPLECILTEKRKKRSTKKEVFNILQAAYVSKPGAQLARQIGASLNDDILFGVFA
 QSKPDSAEPMDRSAMCAFPIKYVNDFFNKIVNKNVRC LQHFYGNHEHCFNR TLL
 RNSSGCEARRDEYRTEFTTALQRVDLFMGQFSEVLLTSISTFIKGLD TIANLGTSEGR
 FMQVVVSRSGPSTPHVNFLLDSHPVSPEVIVEHTLNQNGYTLVITGKKITKIPLNGLG
 CRHFQSCSQCLSAPPFVQCGWCHDKCVRSEECLSGTWTQQICLPAIYKVFNPNSAPL
 EGGTRLTICGWDFGFRNKNKFDLKKTRVLLGNESCTLT LSESTMNTLKCTVGPAMN
 KHFNMSIIISNGHGTTQYSTFSYVDPVITSISP KYGPMAGGTLT LTGNYNLNSGNSRHI
 SIGGKTCTLKSVSNSILECYTPAQ TISTEFAVKLKIDLANRETSIFSYREDPIVYEIHPTK
 SFISGGSTITGVGKNLNSVSVPRM VINVHEAGR NFTVACQHRNSEIICCTTPSLQQL
 NLQLPLKTKAFFMLDGILSKYFDLIYVHNPVFKPF EKPMISMGNENVLEIKGNDIDPE
 AVKGEVLKVGKSCENIHLHSEAVLCTVPNDLLKL NSELNIEWKQAISSTVLGKVIVQ
 PDQNFTGLIAGVVSISTALLLLLGFFLWLK KRKQIKDLGSELVRYDARVHTPHLDRLV
 SARVSPTTEMVSNESVDYRATFPEDQFPNSSQNGSCRQVQYPLTDMSPILTS GDS
 DISSPLLQNTVHIDLSALNPELVQAVQHVVIGPSSLIVHFNEVIGRGHFGCVYHG TLLD
 NDGKKIHCAVKSLNRITDIGEVSQFLTEGIIMKDF SHPNVLSLLGICLRSEGSPLVVLP
 YMKHGDLRN FIRNETHNPTVKDLIGFGLQVAKGM KYLASKKFVHRDLAARN CMLDE
 KFTVKVADFG LARDMYDKEYYSVHNKTGAKLPVKWMALES LQTQKFTTKSDVWSF
 GVLLWELMTRGAPPYPDVNTFDITVYLLQGRLLQPEYCPDPLYEVMLKCWHPKAE
 MRPSFSELVSRISAIFSTFIGEHYVHV NATYVNVKCVAPYPSLLSSEDNADDEVDTRP
 ASFWETSTRTRPLEQKLISEEDLAANDILDYKDDDDKV

Purity > 80% as determined by SDS-PAGE and Coomassie blue staining

Stability Stable for 3 months from receipt of products under proper storage and handling conditions.

Storage Store at -80 centigrade. Avoid repeated freeze-thaw cycles.

 Tel: 1-631-559-9269 1-516-512-3133

 Email: info@creative-biomart.com  Fax: 1-631-938-8127

 45-1 Ramsey Road, Shirley, NY 11967, USA

Concentration 50 µg/mL as determined by BCA

Storage Buffer 100 mM glycine, 25 mM Tris-HCl, pH 7.3.

GENE INFORMATION

Gene Name MET MET proto-oncogene, receptor tyrosine kinase [Homo sapiens (human)]

Official Symbol MET

Synonyms MET; met proto-oncogene (hepatocyte growth factor receptor); hepatocyte growth factor receptor; HGFR; RCCP2; SF receptor; HGF receptor; oncogene MET; HGF/SF receptor; proto-oncogene c-Met; scatter factor receptor; tyrosine-protein kinase Met; met proto-oncogene tyrosine kinase; AUTS9; c-Met;

Gene ID 4233

mRNA Refseq NM_000245

Protein Refseq NP_000236

MIM 164860

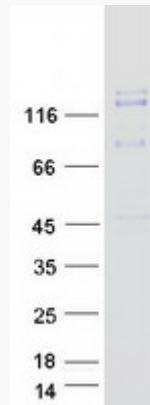
UniProt ID P08581

 Tel: 1-631-559-9269 1-516-512-3133

 Email: info@creative-biomart.com  Fax: 1-631-938-8127

 45-1 Ramsey Road, Shirley, NY 11967, USA

SDS-PAGE



 Tel: 1-631-559-9269 1-516-512-3133

 Email: info@creative-biomart.com  Fax: 1-631-938-8127

 45-1 Ramsey Road, Shirley, NY 11967, USA