

Recombinant Human METAP1 Protein, Myc/DDK-tagged, C13 and N15-labeled

Cat. No. METAP1-3777H Lot. No. (See product label)

SPECIFICATION

Product Overview	METAP1 MS Standard C13 and N15-labeled recombinant protein (NP_055958) with a C-terminal MYC/DDK tag, was expressed in HEK293 cells.
Species	Human
Source	HEK293
Description	METAP1 (Methionyl Aminopeptidase 1) is a Protein Coding gene. Diseases associated with METAP1 include Microsporidiosis. Among its related pathways are Signaling by GPCR and Metabolism of fat-soluble vitamins. Gene Ontology (GO) annotations related to this gene include hydrolase activity and metalloexopeptidase activity. An important paralog of this gene is METAP1D.
Molecular Mass	30.37 kDa
AA Sequence	MSESEQALKGTSQIKLLSSEIDIEGMRLVCRLAREVLDVAAGMIKPGVTTEEIDHAVHL ACIARNCYPSPLNYYNFPKSCCTSVNEVICHGIPDRRPLQEGDIVNVDITLYRNGYHG DLNETFFVGEVDDGARKLVQTTYECLMQAIDAVKPGVRYRELGNIQKHAQANGFSV VRSYCGHGIHKLFTAPNVPHYAKNKAVGVMKSGHVFTIEPMICEGGWQDETWPD GWTAVTRDGKRSQAQFEHTLLVTDGCEILTRRLDSARPHFMSQFTRTRPLEQKLISE EDLAANDILDYKDDDDKV
Purity	> 80% as determined by SDS-PAGE and Coomassie blue staining

 Tel: 1-631-559-9269 1-516-512-3133

 Email: info@creative-biomart.com  Fax: 1-631-938-8127

 45-1 Ramsey Road, Shirley, NY 11967, USA

Stability	Stable for 3 months from receipt of products under proper storage and handling conditions.
Storage	Store at -80 centigrade. Avoid repeated freeze-thaw cycles.
Concentration	50 µg/mL as determined by BCA
Storage Buffer	100 mM glycine, 25 mM Tris-HCl, pH 7.3.

GENE INFORMATION

Gene Name	METAP1 methionyl aminopeptidase 1 [Homo sapiens (human)]
Official Symbol	METAP1
Synonyms	METAP1; methionyl aminopeptidase 1; methionine aminopeptidase 1; KIAA0094; MAP1A; MetAP1A; Peptidase M; MAP 1; metAP 1; peptidase M 1; DKFZp781C0419;
Gene ID	23173
mRNA Refseq	NM_015143
Protein Refseq	NP_055958
MIM	610151
UniProt ID	P53582

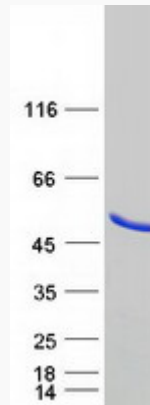
 Tel: 1-631-559-9269 1-516-512-3133

 Email: info@creative-biomart.com  Fax: 1-631-938-8127

 45-1 Ramsey Road, Shirley, NY 11967, USA



SDS-PAGE



Tel: 1-631-559-9269 1-516-512-3133

Email: info@creative-biomart.com Fax: 1-631-938-8127

45-1 Ramsey Road, Shirley, NY 11967, USA