

Recombinant Human METAP1 Protein (Met1-Phe386)

Cat. No. METAP1-4134H Lot. No. (See product label)

SPECIFICATION

Product Overview	Recombinant human METAP1 (Met1-Phe386) without tag was expressed in E. coli.
Species	Human
Source	E.coli
ProteinLength	Met1-Phe386
Form	Lyophilized powder/frozen liquid
Molecular Mass	42.46 kDa
Purity	>90% as determined by SDS-PAGE.
Notes	For research use only.
Storage	Use a manual defrost freezer and avoid repeated freeze thaw cycles. Store at 2 to 8 centigrade for one week. Store at -20 to -80 centigrade for twelve months from the date of receipt.
Storage Buffer	Supplied as solution form in PBS or lyophilized from PBS.
Reconstitution	Reconstitute in sterile water for a stock solution.
Shipping	They are shipped out with dry ice/blue ice unless customers require otherwise.

 Tel: 1-631-559-9269 1-516-512-3133

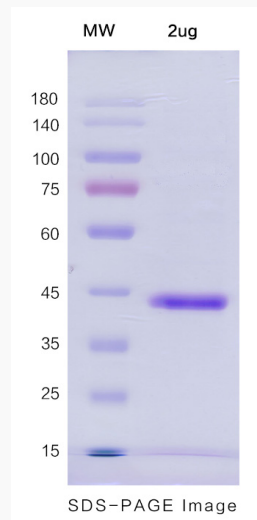
 Email: info@creative-biomart.com  Fax: 1-631-938-8127

 45-1 Ramsey Road, Shirley, NY 11967, USA

GENE INFORMATION

Gene Name	METAP1 methionyl aminopeptidase 1 [Homo sapiens (human)]
Official Symbol	METAP1
Synonyms	METAP1; methionyl aminopeptidase 1; methionine aminopeptidase 1; KIAA0094; MAP1A; MetAP1A; Peptidase M; MAP 1; metAP 1; peptidase M 1; DKFZp781C0419;
Gene ID	23173
mRNA Refseq	NM_015143
Protein Refseq	NP_055958
MIM	610151
UniProt ID	P53582

SDS-PAGE



Tel: 1-631-559-9269 1-516-512-3133

Email: info@creative-biomart.com Fax: 1-631-938-8127

45-1 Ramsey Road, Shirley, NY 11967, USA