

Recombinant Human METAP1 Protein, GST-tagged

Cat. No. METAP1-4416H Lot. No. (See product label)

SPECIFICATION

Product Overview	Human METAP1 full-length ORF (NP_055958.1, 1 a.a. - 272 a.a.) recombinant protein with GST-tag at N-terminal.
Species	Human
Source	Wheat Germ
Description	METAP1 (Methionyl Aminopeptidase 1) is a Protein Coding gene. Among its related pathways are Metabolism of fat-soluble vitamins and Signaling by GPCR. GO annotations related to this gene include hydrolase activity and metalloexopeptidase activity. An important paralog of this gene is METAP1D.
Molecular Mass	56.8 kDa
AA Sequence	MSESEQALKGTSQIKLLSSEIDIEGMRLVCRLAREVLDVAAGMIKPGVTTEEIDHAVHL ACIARNCYPSPLNYYNFPKSCCTSVNEVICHGIPDRRPLQEGDIVNVDITLYRNGYHG DLNETFFVGEVDDGARKLVQTTYECLMQAIDAVKPGVRYRELGNIIQKHAQANGFSV VRSYCGHGIHKLFTAPNVPHYAKNKAVGVMKSGHVFTIEPMICEGGWQDETWPD GWTAVTRDGGKRSQAQFEHTLLVTDGCEILTRRLDSARPHFMSQF
Applications	Enzyme-linked Immunoabsorbent Assay Western Blot (Recombinant protein) Antibody Production Protein Array

 Tel: 1-631-559-9269 1-516-512-3133

 Email: info@creative-biomart.com  Fax: 1-631-938-8127

 45-1 Ramsey Road, Shirley, NY 11967, USA

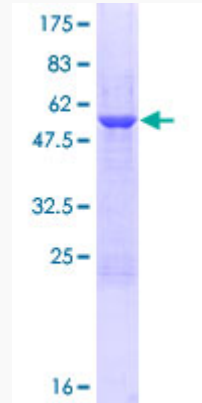
Notes	Best use within three months from the date of receipt of this protein.
Storage	Store at -80 centigrade. Aliquot to avoid repeated freezing and thawing.
Storage Buffer	50 mM Tris-HCl, 10 mM reduced Glutathione, pH=8.0 in the elution buffer.
GENE INFORMATION	
Gene Name	METAP1 methionyl aminopeptidase 1 [Homo sapiens]
Official Symbol	METAP1
Synonyms	METAP1; methionyl aminopeptidase 1; methionine aminopeptidase 1; KIAA0094; MAP1A; MetAP1A; Peptidase M; MAP 1; metAP 1; peptidase M 1; DKFZp781C0419;
Gene ID	23173
mRNA Refseq	NM_015143
Protein Refseq	NP_055958
MIM	610151
UniProt ID	P53582

 Tel: 1-631-559-9269 1-516-512-3133

 Email: info@creative-biomart.com  Fax: 1-631-938-8127

 45-1 Ramsey Road, Shirley, NY 11967, USA

**Quality Control
Testing**



12.5% SDS-PAGE Stained with Coomassie Blue

 Tel: 1-631-559-9269 1-516-512-3133

 Email: info@creative-biomart.com  Fax: 1-631-938-8127

 45-1 Ramsey Road, Shirley, NY 11967, USA