

Recombinant Human methionyl aminopeptidase type 1D, mitochondrial protein, His tagged

Cat. No. METAP1D-2468H Lot. No. (See product label)

SPECIFICATION

Product Overview	Recombinant Human METAP1D protein (44-335aa) with His tag was expressed in Baculovirus-Insect Cells.
Species	Human
Source	Insect Cells
ProteinLength	44-335aa
Description	The N-terminal methionine excision pathway is an essential process in which the N-terminal methionine is removed from many proteins, thus facilitating subsequent protein modification. In mitochondria, enzymes that catalyze this reaction are called methionine aminopeptidases (MetAps, or MAPs; EC 3.4.11.18) (Serero et al., 2003 [PubMed 14532271]).
Tag	C-His
Molecular Mass	33 kDa
AA Sequence	MRQRDISHSIVLPAAVSSAHPVPKHIKKPDYVTTGIVPDWGDSEVKNEDQIQGLHQA CQLARHVLLLAGKSLKVDMTTEEIDALVHREIISHNAYPSPLGYGGFPKSVCTSVNNV LCHGIPDSRPLQDGDIIINIDVTVYYNGYHGDTSFTLVGNVDECGKKLVEVARRCRD EAIAACRAGAPFSVIGNTISHITHQNGFQVCPHFVGHGIGSYFHGHPEIWHHANDSD LPMEEGMAFTIEPIITEGSPEFKVLEDAWTVVSLDNQRSQAQFEHTVLITSRGAQILTKL

 Tel: 1-631-559-9269 1-516-512-3133

 Email: info@creative-biomart.com  Fax: 1-631-938-8127

 45-1 Ramsey Road, Shirley, NY 11967, USA

	PHEAHHHHHHHHH
Endotoxin	< 1 EU/μg by LAL
Purity	> 90% by SDS-PAGE
Storage	Store it under sterile conditions at -20 to -80 centigrade. It is recommended that the protein be aliquoted for optimal storage. Avoid repeated freeze-thaw cycles.
Storage Buffer	Sterile PBS, pH7.4
Concentration	1 mg/mL by BCA

GENE INFORMATION

Gene Name	METAP1D methionyl aminopeptidase type 1D, mitochondrial [Homo sapiens (human)]
Official Symbol	METAP1D
Synonyms	METAP1D; methionyl aminopeptidase type 1D (mitochondrial); methionine aminopeptidase 1D, mitochondrial; MAP1D; Metap1I; methionine aminopeptidase 1D; CDS of metAP-3 within PCR fragment; methionyl aminopeptidase type 1D, mitochondrial
Gene ID	254042
mRNA Refseq	NM_199227
Protein Refseq	NP_954697

 Tel: 1-631-559-9269 1-516-512-3133

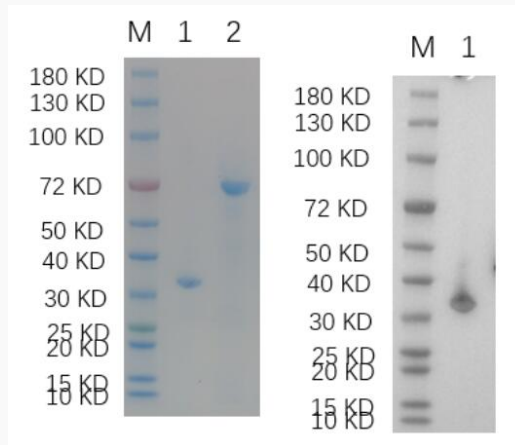
 Email: info@creative-biomart.com  Fax: 1-631-938-8127

 45-1 Ramsey Road, Shirley, NY 11967, USA

MIM 610267

UniProt ID Q6UB28

**Reducing 4%-20%
SDS-PAGE (CBB
stained) and WB
(Anti-His Mouse
Monoclonal
Antibody) analysis
profiles of purified
METAP1D.**



1. METAP1D
2. BSA

 Tel: 1-631-559-9269 1-516-512-3133

 Email: info@creative-biomart.com  Fax: 1-631-938-8127

 45-1 Ramsey Road, Shirley, NY 11967, USA