

Recombinant Human METAP1D Protein (Arg44-Ala335), N/C-His tagged

Cat. No. METAP1D-4167H Lot. No. (See product label)

SPECIFICATION

Product Overview	Recombinant human METAP1D (Arg44-Ala335) fused with the N/C-terminal His tag was expressed in E. coli.
Species	Human
Source	E.coli
ProteinLength	Arg44-Ala335
Form	Lyophilized powder/frozen liquid
Molecular Mass	32.12 kDa
Purity	>90% as determined by SDS-PAGE.
Notes	For research use only.
Storage	Use a manual defrost freezer and avoid repeated freeze thaw cycles. Store at 2 to 8 centigrade for one week. Store at -20 to -80 centigrade for twelve months from the date of receipt.
Storage Buffer	Supplied as solution form in PBS or lyophilized from PBS.
Reconstitution	Reconstitute in sterile water for a stock solution.

 Tel: 1-631-559-9269 1-516-512-3133

 Email: info@creative-biomart.com  Fax: 1-631-938-8127

 45-1 Ramsey Road, Shirley, NY 11967, USA

Shipping They are shipped out with dry ice/blue ice unless customers require otherwise.

GENE INFORMATION

Gene Name METAP1D methionyl aminopeptidase type 1D (mitochondrial) [Homo sapiens (human)]

Official Symbol METAP1D

Synonyms METAP1D; methionyl aminopeptidase type 1D (mitochondrial); methionine aminopeptidase 1D, mitochondrial; MAP1D; Metap1I; methionine aminopeptidase 1D; CDS of metAP-3 within PCR fragment; methionyl aminopeptidase type 1D, mitochondrial;

Gene ID 254042

mRNA Refseq NM_199227

Protein Refseq NP_954697

MIM 610267

UniProt ID Q6UB28

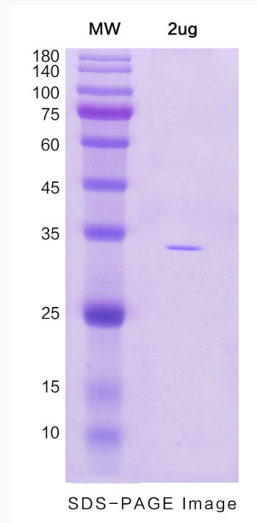
 Tel: 1-631-559-9269 1-516-512-3133

 Email: info@creative-biomart.com  Fax: 1-631-938-8127

 45-1 Ramsey Road, Shirley, NY 11967, USA



SDS-PAGE



Tel: 1-631-559-9269 1-516-512-3133

Email: info@creative-biomart.com Fax: 1-631-938-8127

45-1 Ramsey Road, Shirley, NY 11967, USA