

## Recombinant Human METAP2 Protein (2-478 aa), His-tagged

Cat. No. METAP2-1454H Lot. No. (See product label)

### SPECIFICATION

<b>Product Overview</b>	Recombinant Human METAP2 Protein (2-478 aa) is produced by Yeast expression system. This protein is fused with a 6xHis tag at the N-terminal. Research Area: Metabolism. Protein Description: Full Length of Mature Protein.
<b>Species</b>	Human
<b>Source</b>	Yeast
<b>ProteinLength</b>	2-478 aa
<b>Description</b>	Cotranslationally removes the N-terminal methionine from nascent proteins. The N-terminal methionine is often cleaved when the second residue in the primary sequence is small and uncharged (Met-Ala-, Cys, Gly, Pro, Ser, Thr, or Val). The catalytic activity of human METAP2 toward Met-Val peptides is consistently two orders of magnitude higher than that of METAP1, suggesting that it is responsible for processing proteins containing N-terminal Met-Val and Met-Thr sequences in vivo. Protects eukaryotic initiation factor EIF2S1 from translation-inhibiting phosphorylation by inhibitory kinases such as EIF2AK2/PKR and EIF2AK1/HCR. Plays a critical role in the regulation of protein synthesis.
<b>Form</b>	Tris-based buffer, 50% glycerol
<b>Molecular Mass</b>	54.8 kDa
<b>AA Sequence</b>	AGVEEVAASGSHLNGDLDPDDREEGAASTAEEAAKKRRKKKKSKGPSAAGEQEP

 Tel: 1-631-559-9269 1-516-512-3133

 Email: [info@creative-biomart.com](mailto:info@creative-biomart.com)  Fax: 1-631-938-8127

 45-1 Ramsey Road, Shirley, NY 11967, USA



DKESGASVDEVARQLERSALEDKERDEDEDGDGDGDGATGKKKKKKKKKRGPK  
 VQTDPPSVPICDLYPNGVFPKGGQECEYPPTQDGR TAAWRTTSEEKALDQASEEIW  
 NDFREAAEAHRQVRKYVMSWIKPGMTMIEICEKLEDCSRKLIKENGLNAGLAFPTGC  
 SLNNCAAHYTPNAGDTTVLQYDDICKIDFGTHISGRIIDCAFTVTFNPKYDTLLKAVKD  
 ATNTGIKCAGIDVRLCDVGEAIQEVMESEYEVEIDGKTYQVKPIRNLNGHSIGQYRIHA  
 GKTVPVIVKGGEATRMEEGEVYAIETFGSTGKGVVHDDMECSHYMKNFDVGHVPIRL  
 PRTKHLNINENFGTLAFCRRWLDRLGESKYL MALKNLCDLGIVDPYPPLCDIKGSY  
 TAQFEHTILLRPTCKEVVSRGDDY

**Purity** > 90% as determined by SDS-PAGE.

**Notes** Repeated freezing and thawing is not recommended. Store working aliquots at 4 centigrade for up to one week.

**Storage** The shelf life is related to many factors, storage state, buffer ingredients, storage temperature and the stability of the protein itself. Generally, the shelf life of liquid form is 6 months at -20 centigrade/-80 centigrade. The shelf life of lyophilized form is 12 months at -20 centigrade/-80 centigrade.

**Concentration** A hardcopy of COA with reconstitution instruction is sent along with the products.

## GENE INFORMATION

**Gene Name** METAP2 methionyl aminopeptidase 2 [ Homo sapiens ]

**Official Symbol** METAP2

**Synonyms** METAP2; MAP2; MNPEP; p67; Peptidase M; MAP 2; metAP 2; peptidase M 2; p67eIF2;

**Gene ID** 10988

Tel: 1-631-559-9269 1-516-512-3133

Email: [info@creative-biomart.com](mailto:info@creative-biomart.com) Fax: 1-631-938-8127

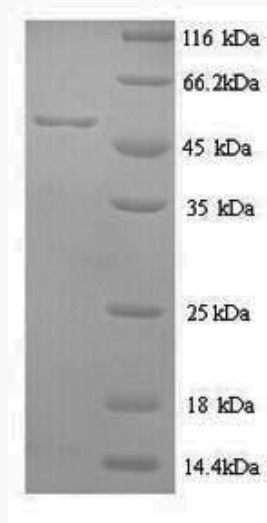
45-1 Ramsey Road, Shirley, NY 11967, USA

mRNA Refseq [NM\\_006838](#)

Protein Refseq [NP\\_006829](#)

MIM [601870](#)

UniProt ID [P50579](#)



(Tris-Glycine gel) Discontinuous SDS-PAGE (reduced) with 5% enrichment gel and 15% separation gel.

 Tel: 1-631-559-9269 1-516-512-3133

 Email: [info@creative-biomart.com](mailto:info@creative-biomart.com)  Fax: 1-631-938-8127

 45-1 Ramsey Road, Shirley, NY 11967, USA